

WAAS
CH 81848
W01A

APP CRS
008°

Rwy Idg
TDZE
Apt Elev

6100
5046
5065

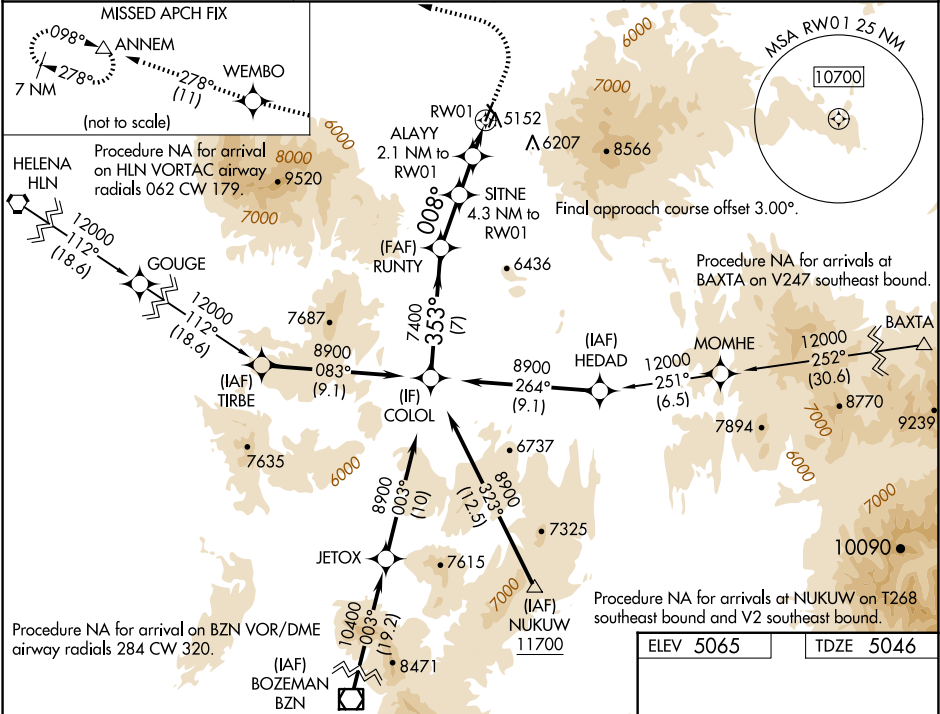
RNAV (GPS) RWY 1

WHITE SULPHUR SPRINGS (7S6)

RNP APCH - GPS.
For uncompensated Baro-VNAV systems, LNAV/VNAV NA below -25°C or above 54°C. Circling NA to Rwy's 13 and 31. Circling NA for Cats C and D east of Rwy 1-19. Circling NA for all Cats east of Rwy 1-19 at night.

MISSED APPROACH: Climb to 5500 then climbing left turn to 9400 direct WEMBO and on track 278° to ANNEM and hold.

AWOS-3PT 118.525	SALT LAKE CENTER 133.4 285.4	CTAF 122.9
---------------------	---------------------------------	---------------



VGSI and RNAV glidepath not coincident COLCOL (VGSI Angle 3.00/TCH 39).				
5500 9400 WEMBO tr 278° ANNEM				
8900 7400 353° 7400 008° 6440 5740				
GP 3.00° TCH 39				
7 NM 3 NM 2.2 NM 1 NM 1 NM				
CATEGORY	A	B	C	D
LPV DA	5296-1 250 (300-1)			
LNAV/VNAV DA	5313-1 267 (300-1)			
LNAV MDA	5420-1 374 (400-1)			
CIRCLING	5620-1 555 (600-1)	5920-1¼ 855 (900-1¼)	5920-2¾ 855 (900-2¾)	5920-3 855 (900-3)

