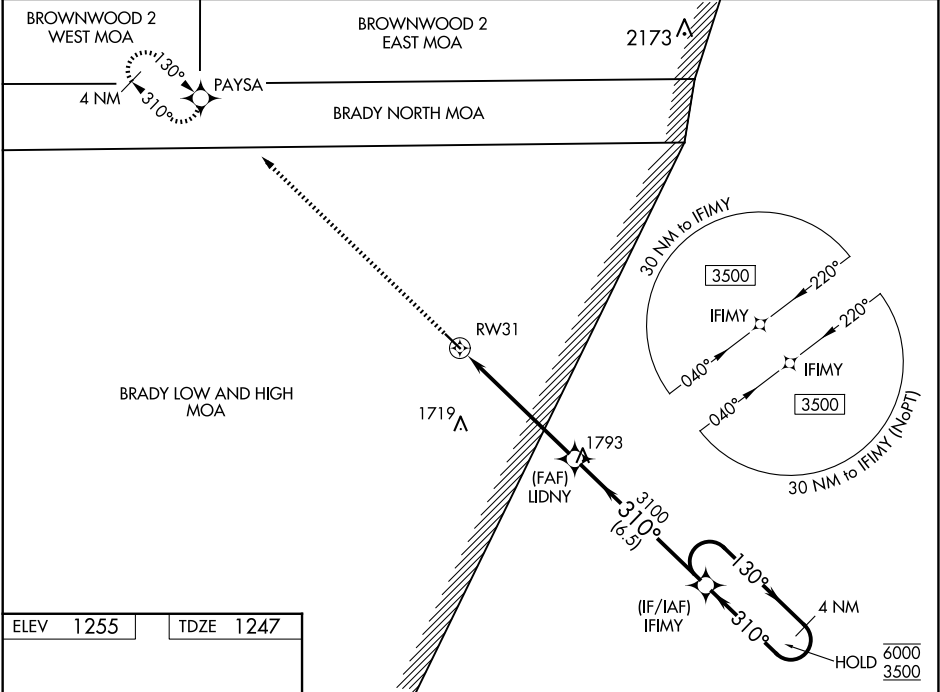


WAAS CH 42944 W31A	APP CRS 310°	Rwy Idg TDZE 1247 Apt Elev 1255	4206
--	------------------------	---	-------------

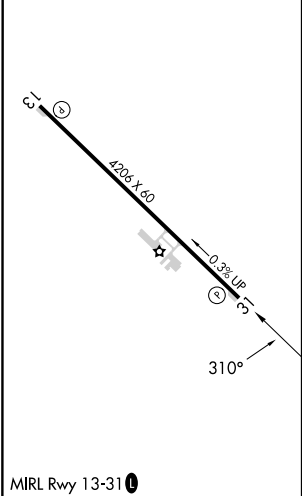
RNAV (GPS) RWY 31
SAN SABA COUNTY MUNI (81R)

RNP APCH - GPS.	MISSED APPROACH: Climb to 3500 direct PAYSA and hold.
Rwy 31 helicopter visibility reduction below ¾ SM NA. For uncompensated Baro-VNAV systems, LNAV/VNAV NA below -17°C or above 54°C.	

AWOS-3P 120.525	HOUSTON CENTER 132.35 317.5	UNICOM 122.8 (CTAF) 0
---------------------------	---------------------------------------	---------------------------------



ELEV 1255	TDZE 1247
-----------	-----------



3500

↑

PAYSA

✱

4 NM

Holding Pattern

IFIMY

130° → 6000

← 310° 3500

GP 3.00°

TCH 40

LIDNY

3100

310°

3100

2.1 NM to RW31

2.1 NM

3.7 NM

6.5 NM

RW31

CATEGORY	A	B	C	D
LPV DA	1497-1	250 (300-1)	NA	
LNAV/VNAV DA	1497-1	250 (300-1)	NA	
LNAV MDA	1940-1	693 (700-1)	NA	
CIRCLING	1940-1	685 (700-1)	NA	