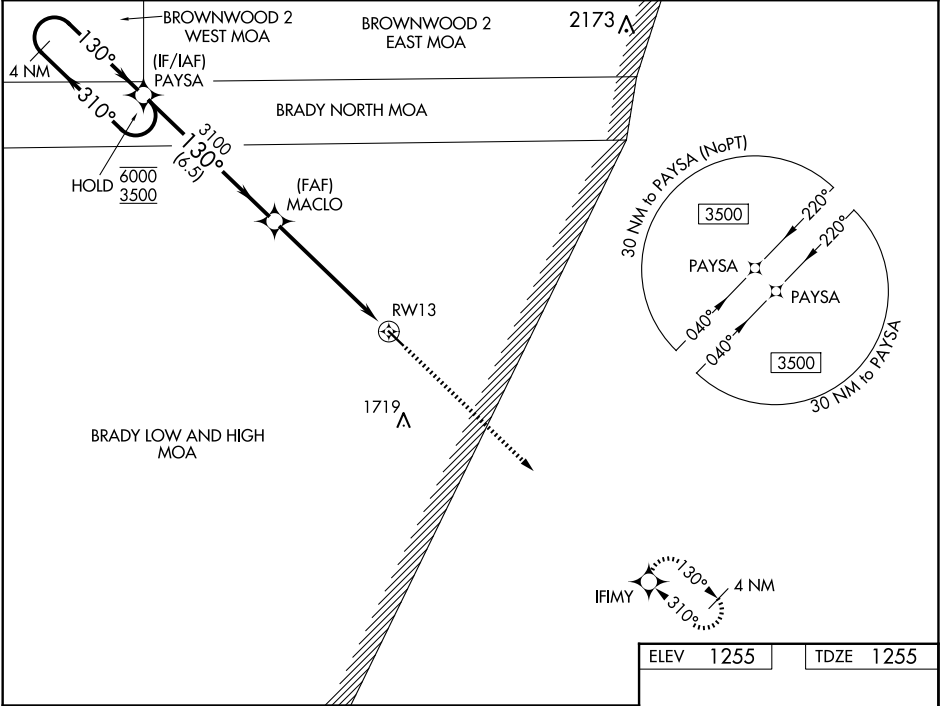


WAAS CH 87144 W13A	APP CRS 130°	Rwy Idg TDZE 1255 Apt Elev 1255	4206
--	------------------------	---	-------------

RNAV (GPS) RWY 13
SAN SABA COUNTY MUNI (81R)

RNP APCH - GPS.	MISSED APPROACH: Climb to 3500 direct IFIMY and hold.
Rwy 13 helicopter visibility reduction below ¾ SM NA. For uncompensated Baro-VNAV systems, LNAV/VNAV NA below -17°C or above 54°C.	

AWOS-3P 120.525	HOUSTON CENTER 132.35 317.5	UNICOM 122.8 (CTAF) 0
---------------------------	---------------------------------------	---------------------------------



4 NM Holding Pattern		PAYSA		MACLO		3500 IFIMY	
6000 3500		←310° 130°→		130°		1.8 NM to RWY 13	
GP 3.00° TCH 40		6.5 NM		3.9 NM		1.8 NM	
CATEGORY	A	B	C	D			
LPV DA	1505-1	250 (300-1)	NA				
LNAV/VNAV DA	1505-1	250 (300-1)	NA				
LNAV MDA	1860-1	605 (700-1)	NA				
CIRCLING	1860-1	605 (700-1)	NA				

