

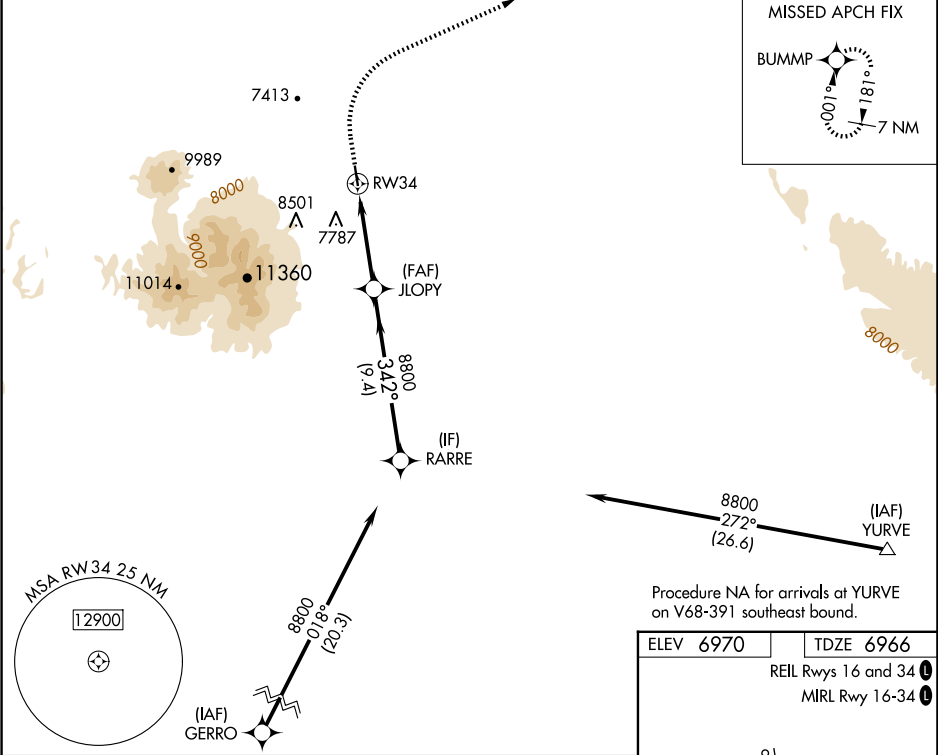
WAAS CH 45546 W34A	APP CRS 342°	Rwy Ldg TDZE Apt Elev	5998 6966 6970
----------------------------------------	------------------------	-----------------------------	-------------------------------------------

RNAV (GPS) RWY 34

MONTICELLO (U64)

RNP APCH - GPS.	MISSED APPROACH: Climb to 7600 then climbing right turn to 9700 direct BUMMP and hold.
▼ For uncompensated Baro-VNAV systems, LNAV/VNAV NA below -28°C or above 54°C.	

AWOS-3PT 121.025	DENVER CENTER 127.55 256.875	UNICOM 122.8 (CTAF) 0
----------------------------	----------------------------------------	---------------------------------



7600	9700	BUMMP	JLOPY	RARRE
↑	↷	✦	8800	8800
1.7 NM to RW34		342°		
RW34		8800		
GP 3.00°		TCH 42		
-1.7 NM		4 NM		9.4 NM
CATEGORY	A	B	C	D
LPV DA	7166-1	200 (200-1)	NA	
LNAV/VNAV DA	7580-1¾	614 (700-1¾)	NA	
LNAV MDA	7540-1	574 (600-1)	NA	

