

APCH CRS	Rwy Idg	50
037°	TDZE	1707
	Arpt Elev	1707

AL-11678 [USN]

BLUEGRASS (9VA5)

RNP APCH

Obtain local altimeter on Bluegrass Advsy, when not rcvd use DULLES Intl altimeter. FEMA SPECIAL FACILITY (Bluegrass) normal opr 0745-1630L Mon-Fri. Phone 504-542-3014 for PPR.

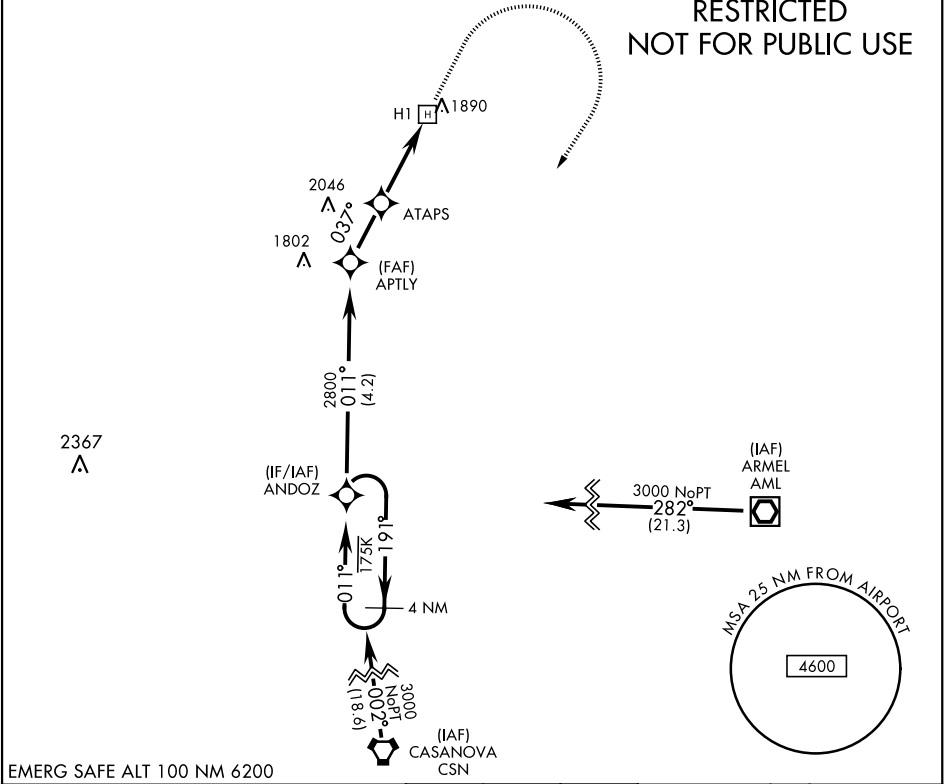
MISSED APPROACH: Climb to 2700 then climbing right turn to 3000 direct ANDOZ and hold.

POTOMAC APP CON
120.45 306.925

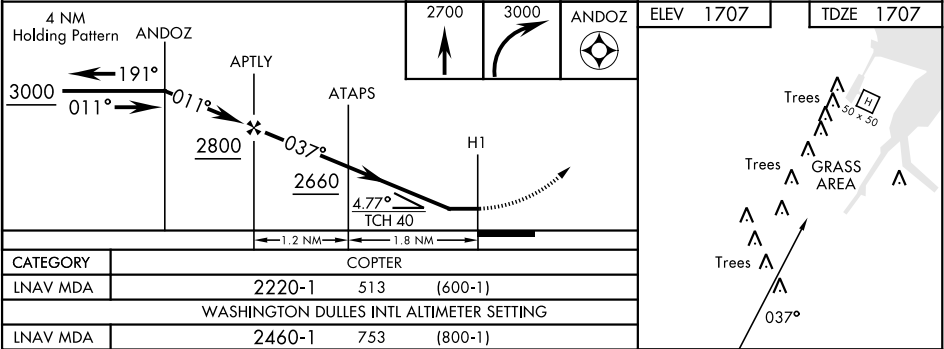
BLUEGRASS ADVISORY ★
126.2 241.0

Visibility reduction by Helicopters NA.

RESTRICTED
NOT FOR PUBLIC USE



EMERG SAFE ALT 100 NM 6200



NE-3, 07 AUG 2025 to 04 SEP 2025

NE-3, 07 AUG 2025 to 04 SEP 2025