

RNP APCH - GPS.

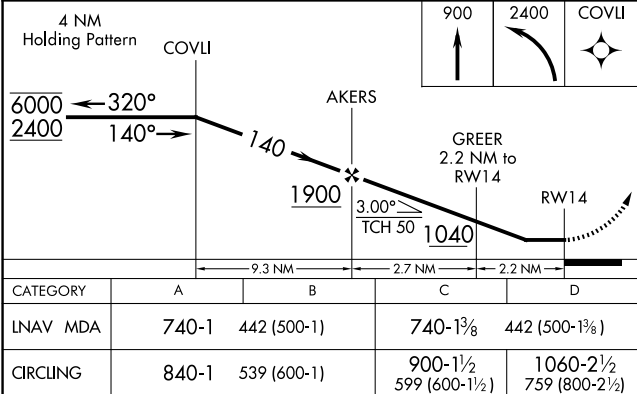
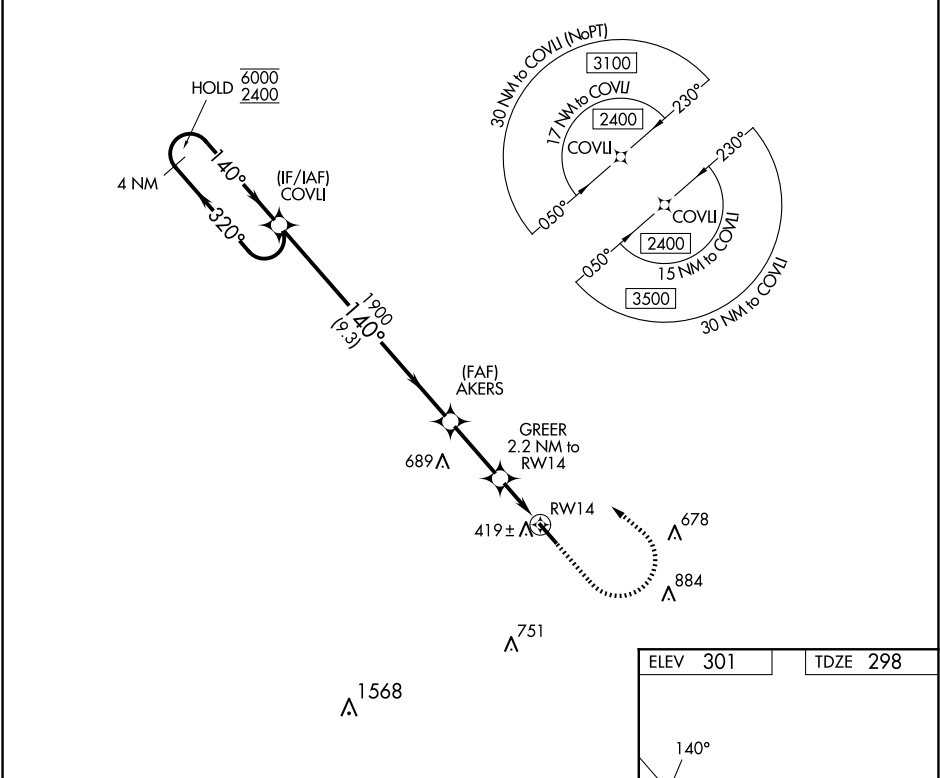
▼

NA

Rwy 14 helicopter visibility reduction below 1 SM NA.
Procedure NA at night. Use Troy altimeter setting.

MISSED APPROACH: Climb to 900 then climbing left turn to 2400 direct COVLI and hold.

TOI ASOS 120.925	MONTGOMERY APP CON ★ 121.2 269.05	UNICOM 122.8 (CTAF) 0
---------------------	--------------------------------------	--------------------------



ELEV 301 TDZE 298

140°

5002 X 80

CATEGORY	A	B	C	D
LNAV MDA	740-1	442 (500-1)	740-1 ³ / ₈	442 (500-1 ³ / ₈)
CIRCLING	840-1	539 (600-1)	900-1 ¹ / ₂ 599 (600-1 ¹ / ₂)	1060-2 ¹ / ₂ 759 (800-2 ¹ / ₂)

REIL Rwy 14 and 32 0
MIRL Rwy 14-32 0