

APP CRS
185°

Rwy Idg
TDZE
Apt Elev

4001
671
671

RNAV (GPS) RWY 18

DELPHI MUNI (I19)

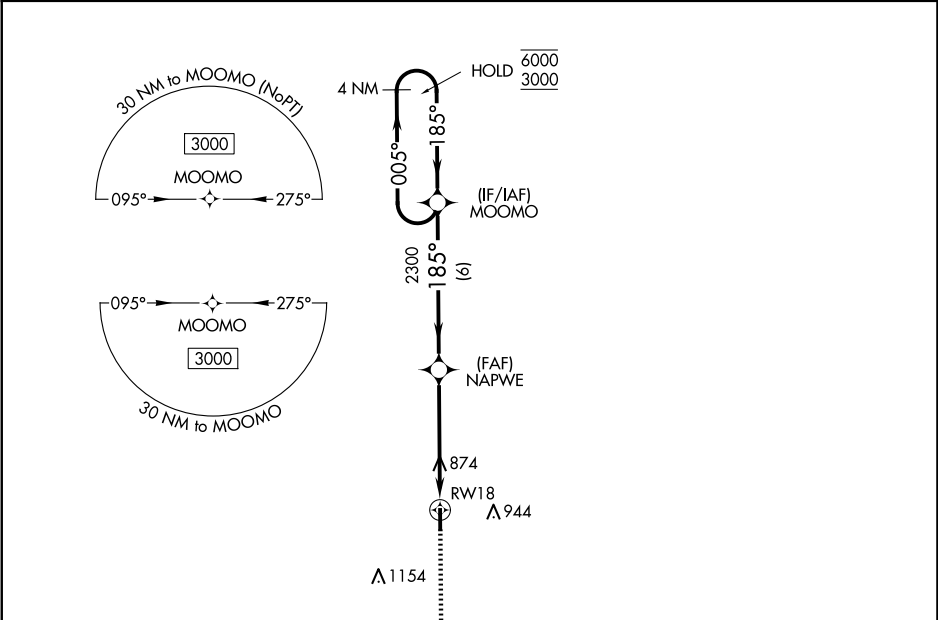
RNP APCH - GPS.

NA

Rwy 18 helicopter visibility reduction below 1 SM NA.
Use Monticello altimeter setting. Procedure NA at night.

MISSED APPROACH: Climb to 3000 direct OCUPA and hold.

MCX AWOS-3P 124.05	GRISSEM APP CON★ 121.05 338.275	CTAF 122.9
------------------------------	---	----------------------



ELEV 671

TDZE 671

185°

81

4001 X 60

36

MIRL Rwy 18-36

REIL Rwys 18 and 36

MISSED APCH FIX

OCUPA

4 NM

3000

OCUPA

VGSI and descent angles not coincident
(VGSI Angle 3.00/TCH 26).

4 NM Holding Pattern

NAPWE

2300

3.00° TCH 30

185°

005°

6000

3000

5 NM

6 NM

CATEGORY	A	B	C	D
LNAV MDA	1160-1	489 (500-1)	NA	
CIRCLING	1160-1	1220-1	NA	
	489 (500-1)	549 (600-1)		