

WAAS CH 40442 W11A	APP CRS 109°	Rwy Ldg 5004 TDZE 7 Apt Elev 7
--	------------------------	---

RNAV (GPS) RWY 11
HYDE COUNTY (7W6)

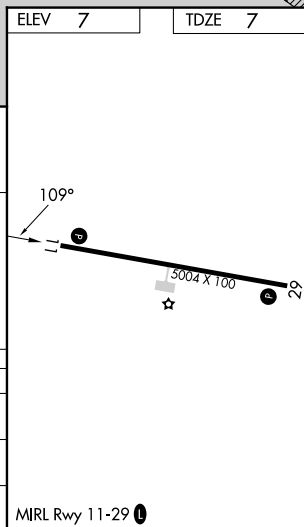
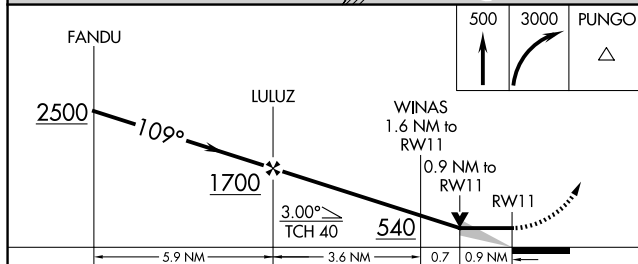
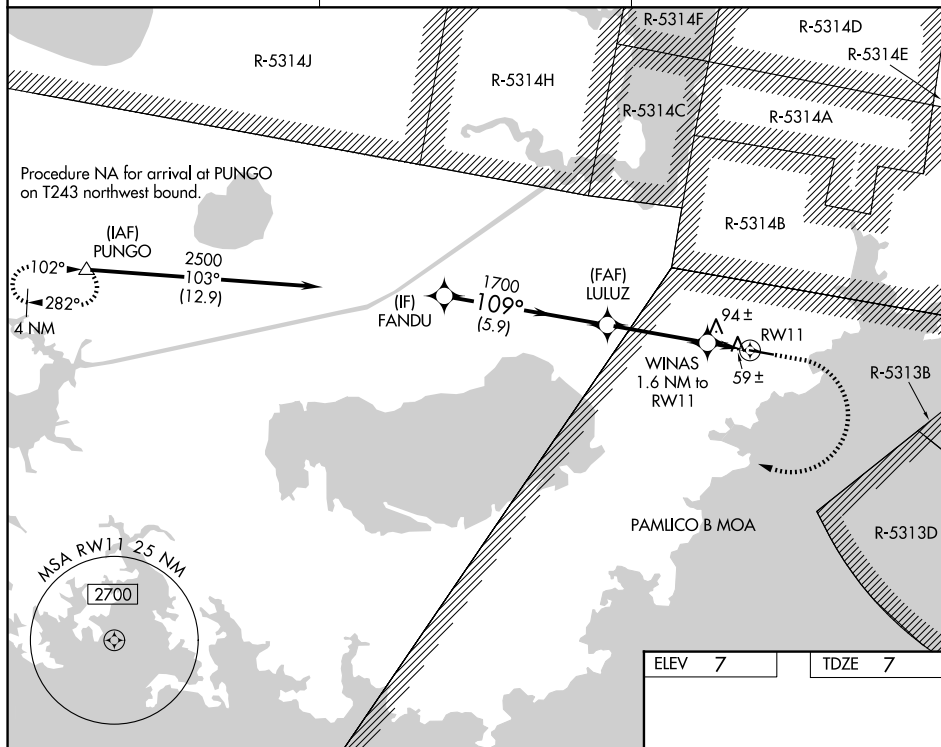
RNP APCH - GPS.

T VDP NA when using HSE altimeter setting. When local altimeter setting
A not received, use HSE altimeter setting and increase all MDAs 80 feet.

MISSED APPROACH: Climb to 500 then climbing right turn 3000 direct PUNGO and hold.

AWOS-3P
119.275

CHERRY POINT APP CON
119.75 360.775

UNICOM
122.7 (CTAF) 

CATEGORY	A	B	C	D
IP MDA	320-1	313 (400-1)	NA	
INAV MDA	360-1	353 (400-1)	NA	
CIRCLING	420-1 413 (500-1)	460-1 453 (500-1)	NA	