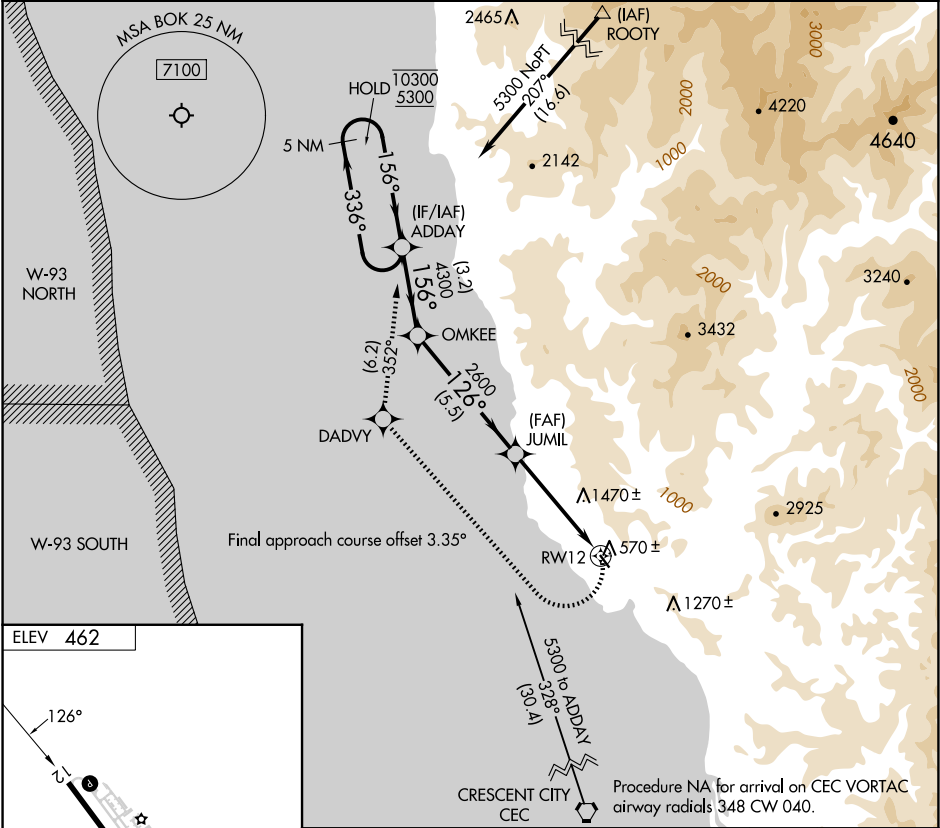


APP CRS	Rwy Ldg	N/A
126°	TDZE	N/A
	Apt Elev	462

RNAV (GPS)-A
BROOKINGS (BOK)

RNP APCH - GPS.	MISSED APPROACH: Climbing right turn to 5300 direct DADVY, and on track 352° to ADDAY and hold, continue climb in hold to 5300.
Procedure NA at night. Circling NA northeast of Rwy 12-30. Rwy 12 and 30 helicopter visibility reduction below 1 SM NA.	

AWOS-3PT 132.025	SEATTLE CENTER 124.85 306.3	UNICOM 122.8 (CTAF) 1
---------------------	--------------------------------	--------------------------



5 NM Holding Pattern		ADDAY	OMKEE	JUMIL	RW12
10300		5300	4300	2600	
← 336°		→ 156°	→ 156°	→ 126°	→ 352°
				4.15° TCH 40	
		3.2 NM	5.5 NM	4.8 NM	
CATEGORY	A	B	C	D	
CIRCLING	1600-1¼ 1138 (1200-1¼)	1600-1½ 1138 (1200-1½)	NA		