

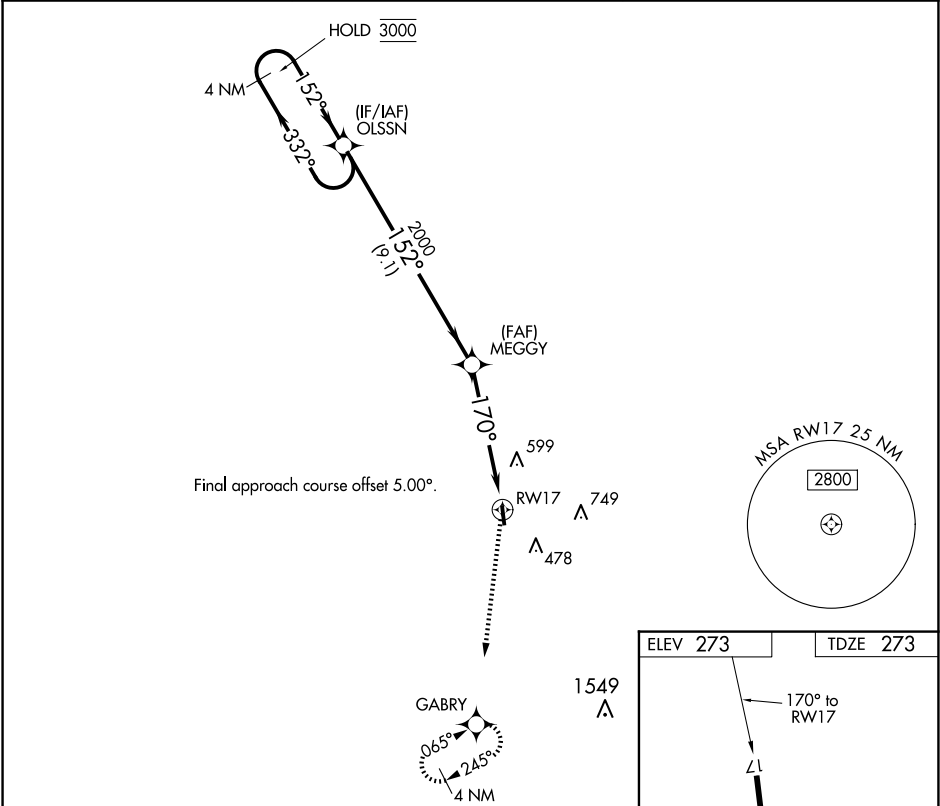
APP CRS	Rwy Idg	3000
170°	TDZE	273
	Apt Elev	273

RNAV (GPS) RWY 17

DEAN GRIFFIN MEML (M24)

RNP APCH - GPS.	MISSED APPROACH: Climb to 3000 direct GABRY and hold, continue climb-in-hold to 3000.
<div><div>▼</div><div>NA</div></div> Rwy 17 helicopter visibility reduction below ¾ SM NA. Use Hattiesburg Bobby L Chain Muni altimeter setting.	

HBG ASOS 135.425	GULFPORT APP CON ★ 127.5 254.25	UNICOM 122.8 (CTAF) 0
---------------------	------------------------------------	--------------------------



4 NM Holding Pattern	OLSSN	VGSI and descent angles not coincident (VGSI Angle 3.00/TCH 35).	3000	GABRY
3000	332°	152°	152°	2000
		3.00° TCH 40	170°	RW17
	9.1 NM	5.3 NM		
CATEGORY	A	B	C	D
LNAV MDA	880-1	607 (700-1)	NA	
CIRCLING	880-1	1040-1	NA	
	607 (700-1)	767 (800-1)		

