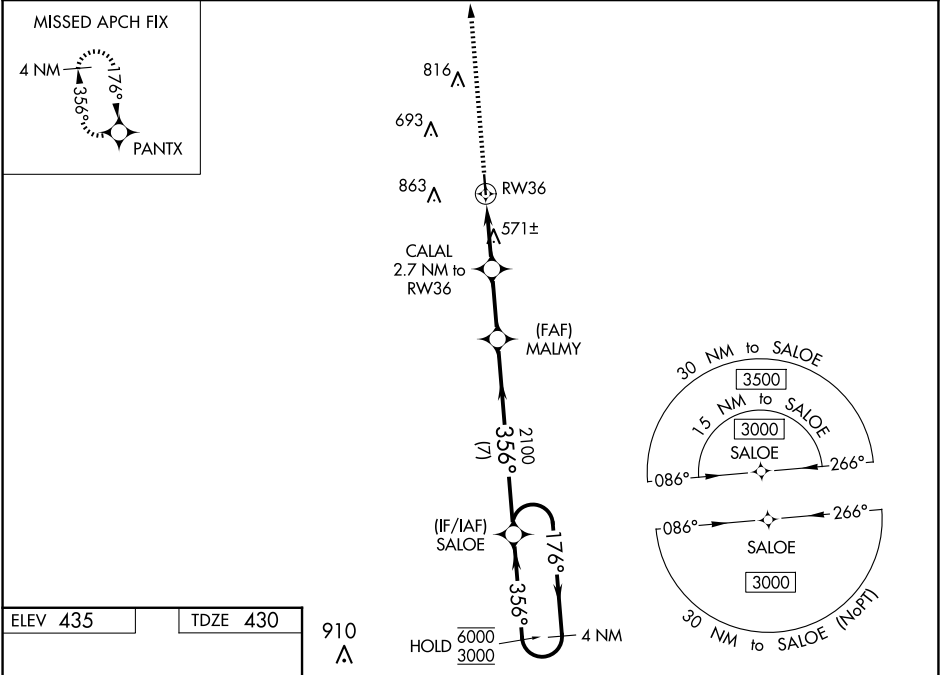


WAAS CH 53542 W36A	APP CRS 356°	Rwy Idg 4007 TDZE 430 Apt Elev 435
--	------------------------	---

RNAV (GPS) RWY 36
COPIAH COUNTY (M11)

RNP APCH - GPS.	
<div><div>▼</div><div>▲ NA</div></div> <div>Circling Rwy 18 NA at night. Rwy 36 helicopter visibility reduction below ¾ SM NA. Baro-VNAV NA. Use Brookhaven altimeter setting; when not received, use Hawkins Fld altimeter setting and increase LPV DA to 756; increase LNAV/VNAV DA to 906; increase all MDAs 40 feet and Circling visibility Cats C and D ¼ SM.</div>	MISSED APPROACH: Climb to 3500 direct PANTX and hold, continue climb-in-hold to 3500.

1R7 AWOS-3P 118.125	MEMPHIS CENTER 132.5 259.1	CTAF 122.9
-------------------------------	--------------------------------------	----------------------



MIRL Rwy 18-36
REIL Rwy 18 and 36

<div> <div>3500</div> <div>↑</div> </div> <div> <div>PANTX</div> <div>✦</div> </div>	<div> <div>SALOE</div> <div>4 NM Holding Pattern</div> <div>176° → 6000</div> <div>← 356° 3000</div> <div>GP 3.00° TCH 44</div> </div>		<div> <div>MALMY</div> <div>2100</div> <div>356°</div> <div>2100</div> <div>1300</div> <div>2.7 NM</div> <div>2.5 NM</div> <div>7 NM</div> </div>	
<div> <div>CALAL</div> <div>2.7 NM to RW36</div> </div> <div> <div>RW36</div> <div>↙</div> </div>	<div> <div>2.7 NM</div> <div>2.5 NM</div> <div>7 NM</div> </div>			
CATEGORY	A	B	C	D
LPV DA	730-1 300 (300-1)	<div> <div>880-1³/₈</div> <div>450 (500-1³/₈)</div> </div>	<div> <div>880-1³/₈</div> <div>450 (500-1³/₈)</div> </div>	
LNAV/VNAV DA	880-1 ³ / ₈	<div> <div>880-1</div> <div>450 (500-1)</div> </div>	<div> <div>880-1³/₈</div> <div>450 (500-1³/₈)</div> </div>	
LNAV MDA	880-1	<div> <div>880-1³/₈</div> <div>450 (500-1³/₈)</div> </div>	<div> <div>880-1³/₈</div> <div>450 (500-1³/₈)</div> </div>	
CIRCLING	<div> <div>940-1</div> <div>505 (600-1)</div> </div>	<div> <div>1140-1</div> <div>705 (800-1)</div> </div>	<div> <div>1280-2¹/₂</div> <div>845 (900-2¹/₂)</div> </div>	<div> <div>1280-2³/₄</div> <div>845 (900-2³/₄)</div> </div>