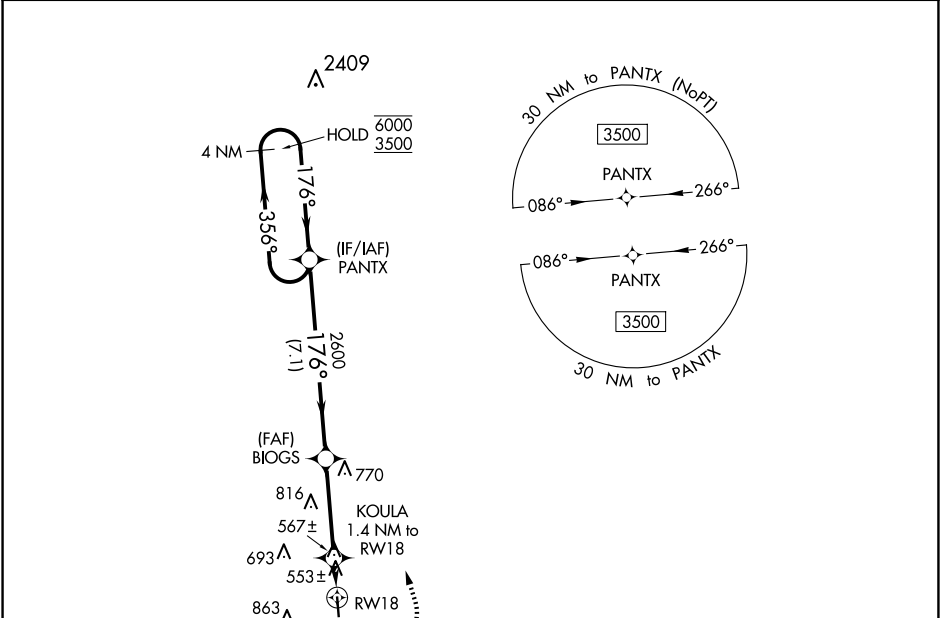


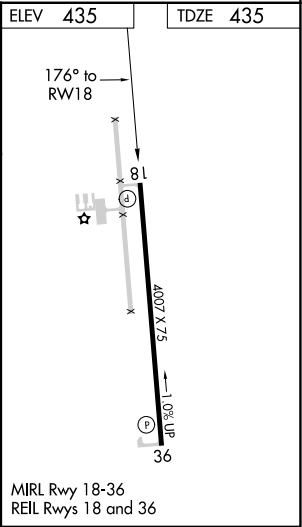
APP CRS	Rwy Idg	4007
176°	TDZE	435
	Apt Elev	435

RNAV (GPS) RWY 18
COPIAH COUNTY (M11)

RNP APCH.		MISSED APPROACH: Climbing left turn to 3500 direct PANTX and hold, continue climb-in-hold to 3500.
1R7 AWOS-3P 118.125	MEMPHIS CENTER 132.5 259.1	CTAF 122.9



ELEV 435		TDZE 435	
4 NM Holding Pattern		PANTX	
6000 ← 356°		PANTX	
3500 → 176°		PANTX	
2600		PANTX	
1080		PANTX	
7.1 NM		PANTX	
3.6 NM		PANTX	
1.4 NM		PANTX	
CATEGORY	A	B	C
LNAV MDA	860-1	425 (500-1)	NA
CIRCLING	940-1	1140-1	NA
	505 (600-1)	705 (800-1)	



SC-4, 07 AUG 2025 to 04 SEP 2025

SC-4, 07 AUG 2025 to 04 SEP 2025