

WAAS

CH 42842

W34A

APP CRS

338°

Rwy Idg

3750

TDZE

919

Apt Elev

924

RNAV (GPS) RWY 34

FARINGTON FLD (K01)

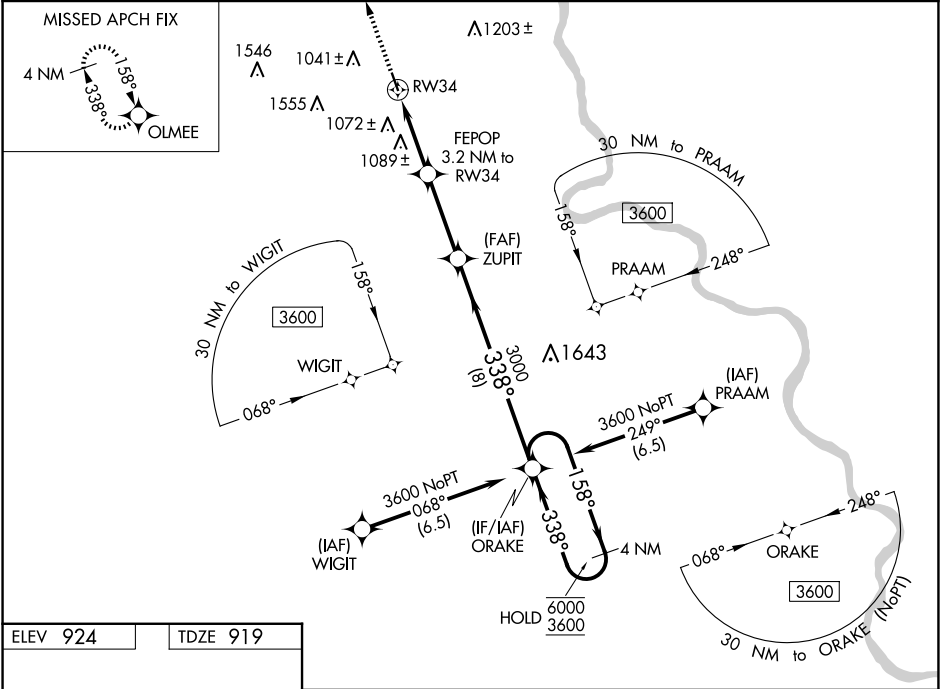
RNP APCH.

NA

Circling NA for Cat C west of Rwy 16-34.  
Baro-VNAV NA.  
Use Brenner Fld altimeter setting.

MISSED APPROACH: Climb to 3600 direct OLMEE and hold.

FNB ASOS 119.275	MINNEAPOLIS CENTER 128.75 346.3	CTAF 122.9
---------------------	------------------------------------	---------------



ELEV 924

TDZE 919

MIRL Rwy 16-34

338° to RW34

3600

OLMEE

\*LNAV only

RW34

FEPOP 3.2 NM to RW34

ZUPIT 3000

ORAKE 4 NM Holding Pattern

1960\*

3000

6000

3600

GP 3.00°

TCH 40

CATEGORY	A	B	C	D
LPV DA	1175-1 256 (300-1)			NA
LNAV/VNAV DA	1302-1 <sup>1</sup> / <sub>8</sub> 383 (400-1 <sup>1</sup> / <sub>8</sub> )			NA
LNAV MDA	1400-1	481 (500-1)	1400-1 <sup>3</sup> / <sub>8</sub> 481 (500-1 <sup>3</sup> / <sub>8</sub> )	NA
CIRCLING	1480-1	556 (600-1)	1540-1 <sup>3</sup> / <sub>4</sub> 616 (700-1 <sup>3</sup> / <sub>4</sub> )	NA

NC-2, 07 AUG 2025 to 04 SEP 2025

NC-2, 07 AUG 2025 to 04 SEP 2025