

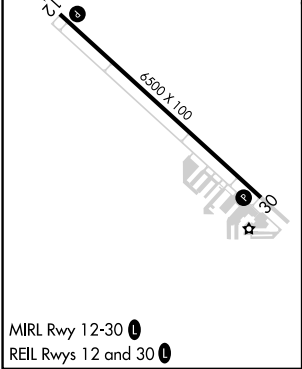
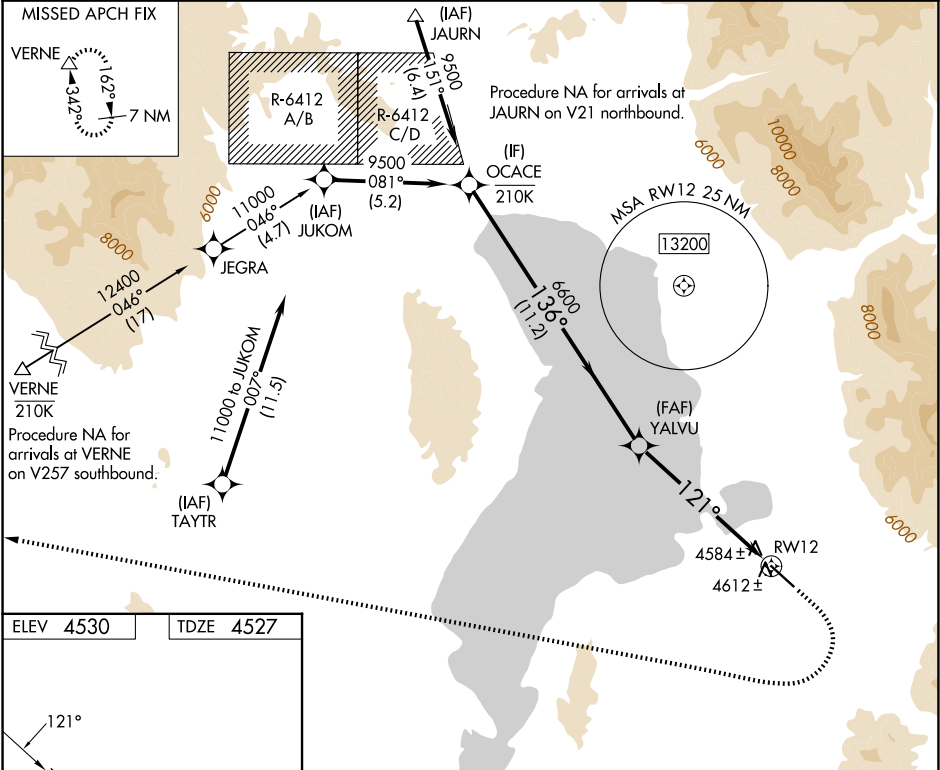
WAAS CH <b>82342</b> <b>W12B</b>	APP CRS <b>121°</b>	Rwy Ldg TDZE <b>4527</b> Apt Elev <b>4530</b>
--	------------------------	---

RNAV (GPS) Z RWY 12

SPANISH FORK MUNI/WOODHOUSE FLD (SPK)

RNP APCH - GPS.	MISSED APPROACH: (Do not exceed 185K until VERNE) Climb to 5000 then climbing right turn to 11500 direct VERNE and hold. *Missed approach requires minimum climb of 380 feet per NM to 7600; if unable to meet climb gradient, see RNAV (GPS) Y RWY 12.
<div><div><div>▼</div><div>NA</div><div>-17°C</div></div><div>Rwy 12 helicopter visibility reduction below ¾ SM NA. When local altimeter setting not received, use PVU altimeter setting and increase all MDAs 20 feet.</div></div>	

AWOS-3PT <b>119.275</b>	SALT LAKE CITY APP CON <b>118.85 233.7</b>	CTAF <b>122.90</b>
----------------------------	---	-----------------------



SW-4, 07 AUG 2025 to 04 SEP 2025

SW-4, 07 AUG 2025 to 04 SEP 2025