

WAAS CH 93742 W35A	APP CRS 353°	Rwy Idg 5500 TDZE 1409 Apt Elev 1409
--	------------------------	---

RNAV (GPS) RWY 35
SIOUX COUNTY RGNL(SXK)

RNP APCH.

V Baro-VNAV and VDP NA when using Le Mars altimeter setting. For uncompensated Baro-VNAV systems, LNAV/VNAV NA below -17°C or above 54°C. When local altimeter setting not received; use Le Mars altimeter setting: increase DA 59 feet and all MDA 60 feet, increase LNAV visibility Cat C/D to ½ SM. For inop ALS, increase LNAV/VNAV all Cats visibility to ¾ SM, and LNAV Cat C/D visibility to ¾ SM. For inop ALS when using Le Mars altimeter setting increase LNAV/VNAV all Cats visibility to ¾ SM.

MALSR



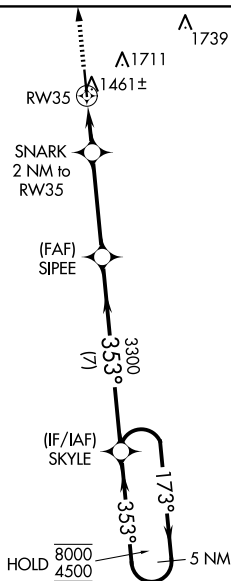
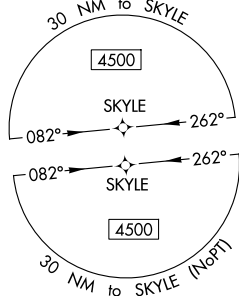
MISSED APPROACH: Climb to 4500 direct HALGA and hold.



AWOS-3P
120.075

SIOUX CITY APP CON ★
 124.6 307.0

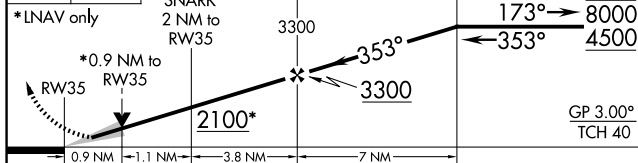
UNICOM
122.7 (CTAF)

MISSED APCH FIX



4500	HALGA
	

* LNAV only



CATEGORY	A	B	C	D
LPV DA	1609-½ 200 (200-½)			
LNAV/ VNAV DA	1659-½ 250 (300-½)			
LNAV MDA	1720-½ 311 (400-½)			
C CIRCLING	1820-1 411 (500-1)	2080-1 671 (700-1)	2080-2 671 (700-2)	2080-2¼ 671 (700-2¼)

