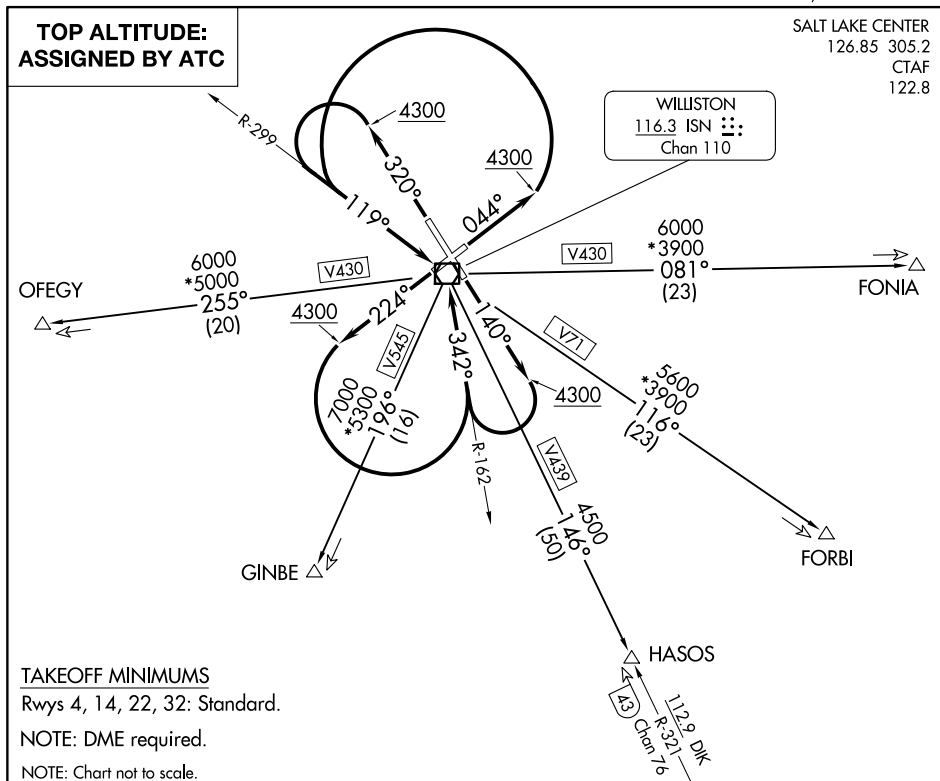


WILLISTON SIX DEPARTURE

WILLISTON BASIN INTL (XWA)
WILLISTON, NORTH DAKOTA



TAKEOFF RUNWAY 4: Climb on heading 044° to 4300 then climbing left turn to intercept ISN VOR/DME R-299 to ISN VOR/DME, thence. . . .

TAKEOFF RUNWAY 14: Climb on heading 140° to 4300 then climbing right turn to intercept ISN VOR/DME R-162 to ISN VOR/DME, thence. . . .

TAKEOFF RUNWAY 22: Climb on heading 224° to 4300 then climbing left turn to intercept ISN VOR/DME R-162 to ISN VOR/DME, thence. . . .

TAKEOFF RUNWAY 32: Climb on heading 320° to 4300 then climbing left turn to intercept ISN VOR/DME R-299 to ISN VOR/DME, thence. . . .

. . .on (transition). Maintain ATC assigned altitude. Expect filed altitude 10 minutes after departure.

FONIA TRANSITION (ISN6.FONIA): From over ISN VOR/DME on ISN R-081 to FONIA.

FORBI TRANSITION (ISN6.FORBI): From over ISN VOR/DME on ISN R-116 to FORBI.

GINBE TRANSITION (ISN6.GINBE): From over ISN VOR/DME on ISN R-196 to GINBE.

HASOS TRANSITION (ISN6.HASOS): From over ISN VOR/DME on ISN R-146 and DIK R-321 to HASOS.

OFEgy TRANSITION (ISN6.OFEgy): From over ISN VOR/DME on ISN R-255 to OFEgy.

WILLISTON SIX DEPARTURE

(ISN6.ISN) 17JUN21

WILLISTON, NORTH DAKOTA
WILLISTON BASIN INTL (XWA)

NC-1, 07 AUG 2025 to 04 SEP 2025