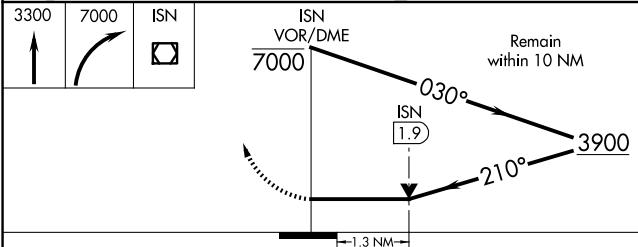
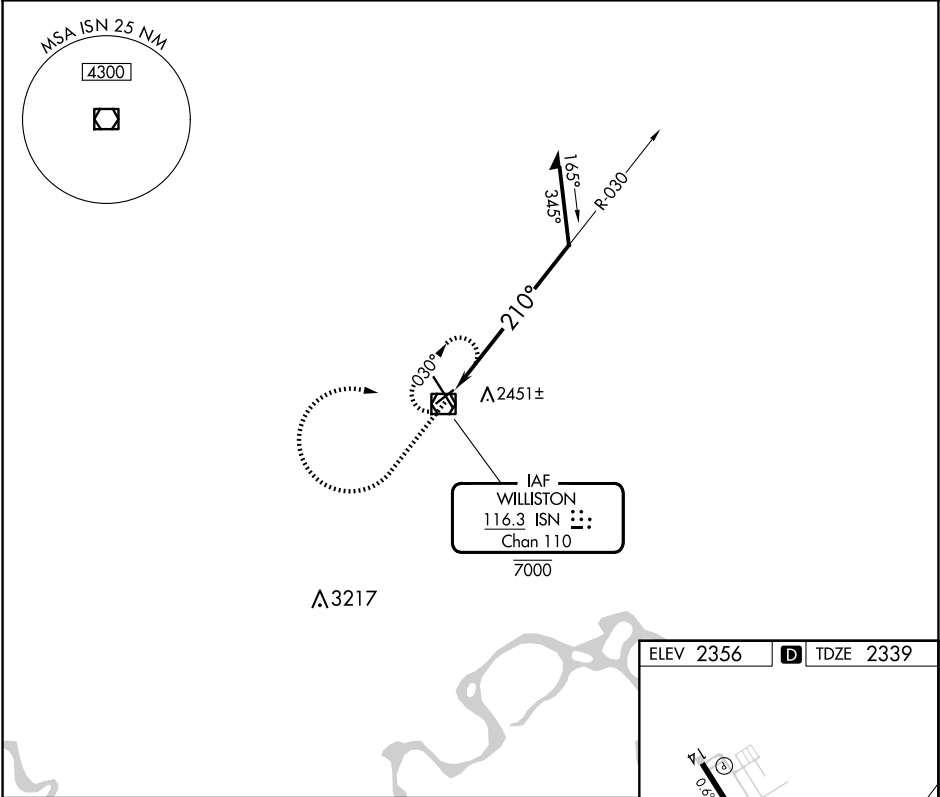


VOR/DME ISN	APP CRS	Rwy Idg	4502
116.3	210°	TDZE	2339
Chan 110		Apt Elev	2356

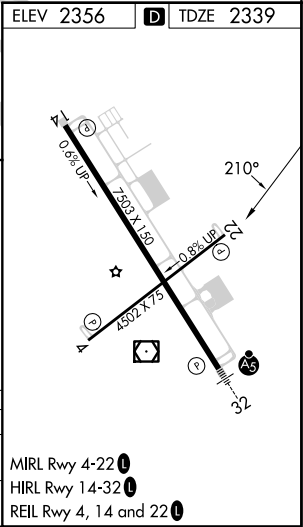
VOR RWY 22
WILLISTON BASIN INTL (XWA)

MISSED APPROACH: Climb to 3300 then climbing right turn to 7000 direct ISN VOR/DME and hold, continue climb-in-hold to 7000.

ASOS 125.925	SALT LAKE CITY CENTER 126.85 305.2	UNICOM 122.8 (CTAF) 1
-----------------	---------------------------------------	--------------------------



CATEGORY	A	B	C	D
S-22	2760-1	421 (500-1)	2760-1¼	421 (500-1¼)
CIRCLING	2760-1 404 (500-1)	2820-1 464 (500-1)	2820-1½ 464 (500-1½)	2920-2 564 (600-2)



NC-1, 07 AUG 2025 to 04 SEP 2025

NC-1, 07 AUG 2025 to 04 SEP 2025