

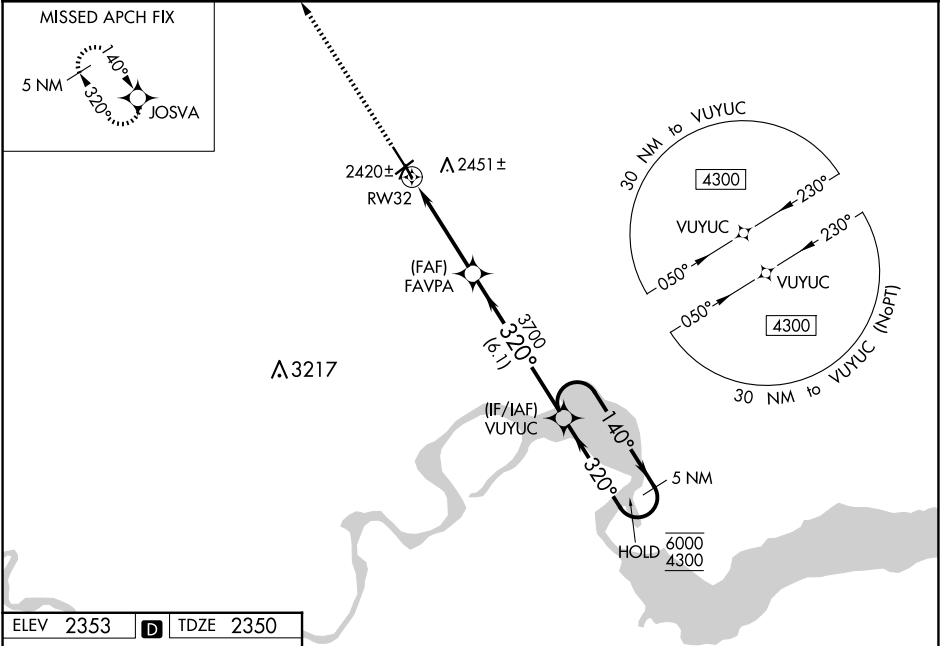
WAAS CH <b>78043</b> <b>W32A</b>	APP CRS <b>320°</b>	Rwy Idg <b>7503</b> TDZE <b>2350</b> Apt Elev <b>2353</b>
--	------------------------	---

RNAV (GPS) RWY 32

WILLISTON BASIN INTL (XWA)

RNP APCH.	MALSR	MISSED APPROACH: Climb to 4300 direct JOSVA and hold.
<div><div></div><div></div></div> <div>For uncompensated Baro-VNAV systems, LNAV/VNAV NA below -19°C or above 54°C. For inop ALS, increase LNAV/VNAV all Cats visibility to ¾ SM.</div>	<div><div></div><div></div></div>	

ASOS <b>125.925</b>	SALT LAKE CITY CENTER <b>126.85 305.2</b>	UNICOM <b>122.8 (CTAF) 1</b>
------------------------	--	---------------------------------



ELEV 2353	D	TDZE 2350
-----------	---	-----------

