

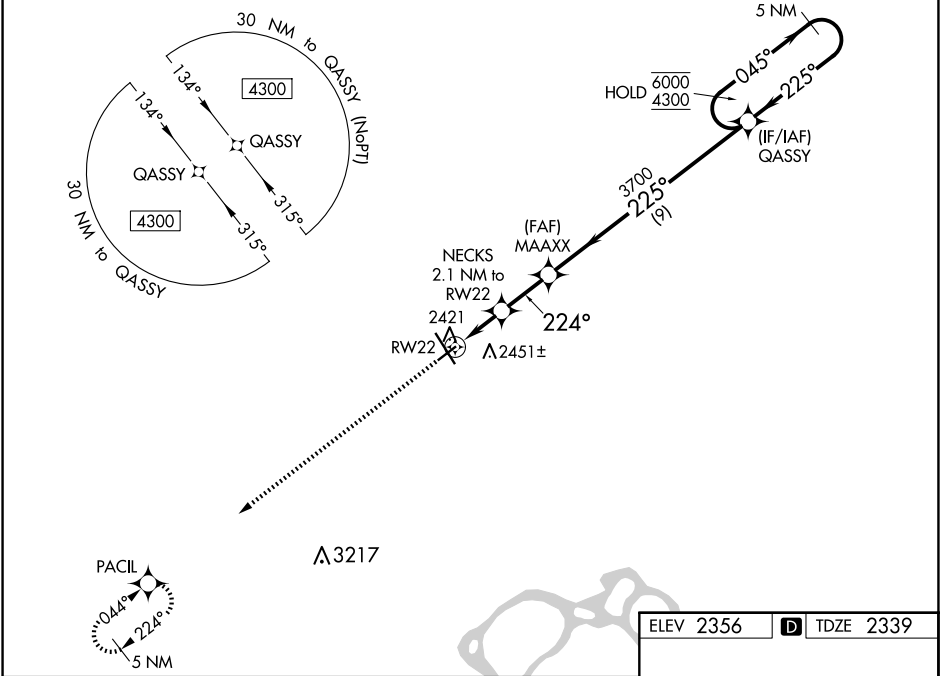
WAAS CH 93943 W22A	APP CRS 224°	Rwy Idg TDZE Apt Elev	4502 2339 2356
--	------------------------	-----------------------------	---

RNAV (GPS) RWY 22

WILLISTON BASIN INTL (XWA)

RNP APCH-GPS.	MISSED APPROACH: Climb to 4300 direct PACIL and hold.
<div><div></div><div></div></div> <div>For uncompensated Baro-VNAV systems, LNAV/VNAV NA below -19°C or above 54°C.</div>	

ASOS 125.925	SALT LAKE CITY CENTER 126.85 305.2	UNICOM 122.8 (CTAF) 0
------------------------	--	---------------------------------



4300	PACIL	NECKS 2.1 NM to RW22	MAAXX	QASSY	5 NM Holding Pattern
*LNAV only	*1.2 NM to RW22	3700	3700	6000 4300	GP 3.00° TCH 40
1.2 NM	0.9 NM	2.1 NM	9 NM		
CATEGORY	A	B	C	D	
LPV DA	2539-1	200 (200-1)			
LNAV/VNAV DA	2589-1	250 (300-1)			
LNAV MDA	2740-1	401 (400-1)	2740-1½	401 (400-1½)	
CIRCLING	2760-1 404 (500-1)	2820-1 464 (500-1)	2820-1½ 464 (500-1½)	2920-2 564 (600-2)	

