

LOC/DME I-XWA 109.1 Chan 28	APP CRS 320°	Rwy Idg 7503 TDZE 2350 Apt Elev 2353
---	------------------------	---

ILS or LOC RWY 32
WILLISTON BASIN INTL (XWA)

DME required.

T
A NA For inop ALS, increase S-LOC 32 Cat C/D visibility to $\frac{7}{8}$ SM.

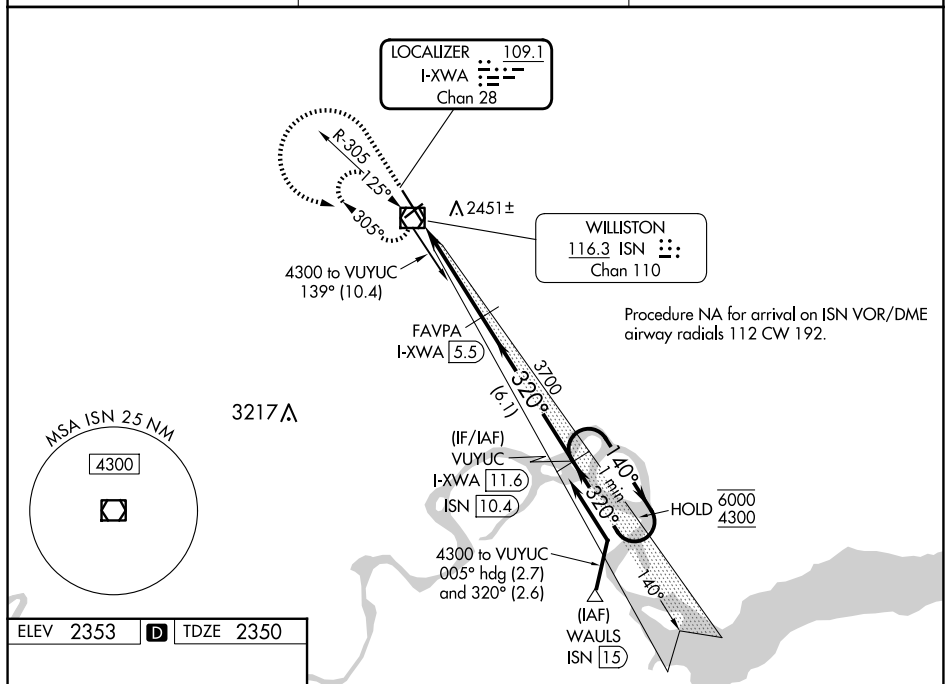
MALSR



MISSED APPROACH: Climb to 3500 then climbing left turn to 4300 direct ISN VOR/DME and hold, continue climb-in-hold to 4300.

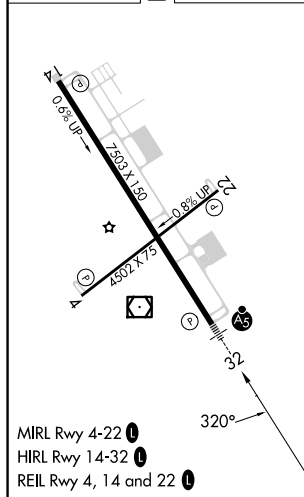
ASOS
125.925

SALT LAKE CITY CENTER
126.85 305.2

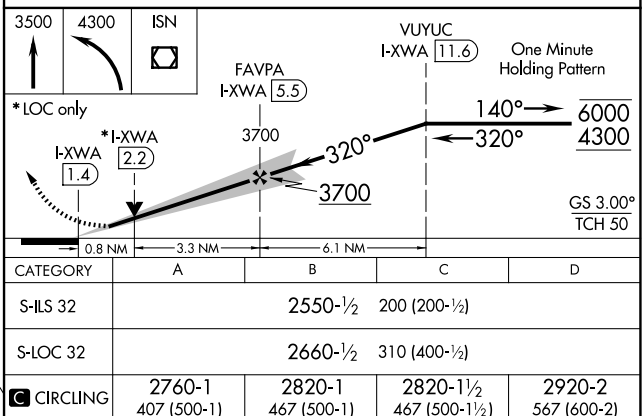
UNICOM
122.8 (CTAF) **L**

NC-1, 07 AUG 2025 to 04 SEP 2025

ELEV 2353	D	TDZE 2350
-----------	----------	-----------



WILLISTON, NORTH DAKOTA
Orig 10OCT19

WILLISTON BASIN INTL (XWA)
ILS or LOC RWY 32

48°16'N-103°45'W