

WAAS CH 77538 W22A	APP CRS 224°	Rwy Idg 5500 TDZE 276 Apt Elev 276
--	------------------------	---

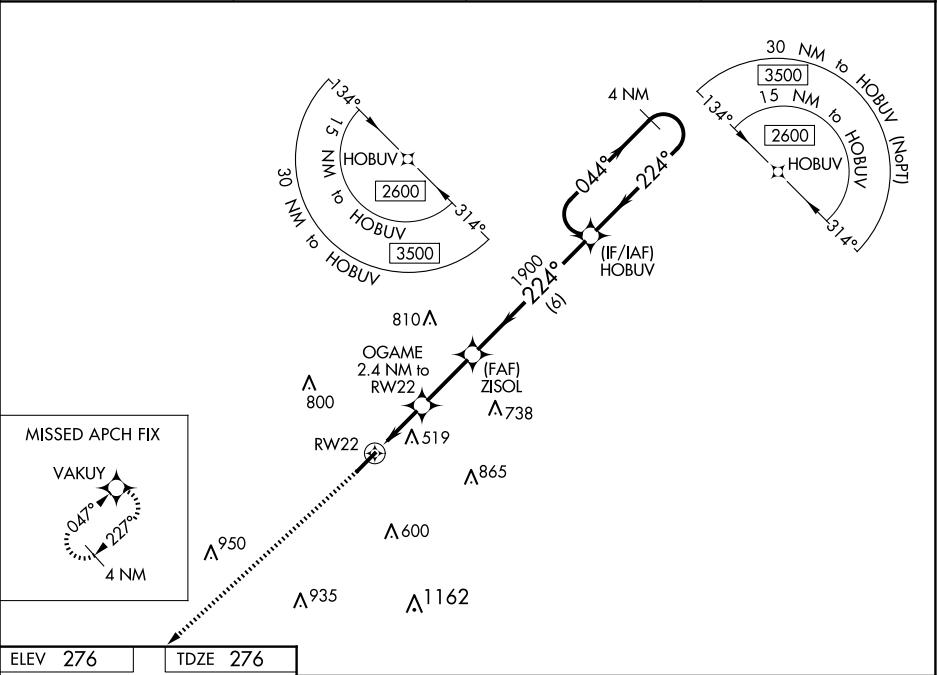
RNAV (GPS) RWY 22

CONWAY RGNL (CXW)

Baro-VNAV NA.
Use Bill and Hillary Clinton National/Adams Field altimeter setting; when not received, procedure NA.
DME/DME RNP-0.3 NA.

MISSED APPROACH: Climb to 3000 direct VAKUY and hold.

AWOS-2 118.775	LITTLE ROCK APP CON 135.4 353.6 (040°-239°) 119.5 306.2 (240°-039°)	CLNC DEL 121.2	UNICOM 123.05 (CTAF) 0
--------------------------	---	--------------------------	---



ELEV 276

TDZE 276

3000

VAKUY

224° to RW22

*LNAV only.

OGAME 2.4 NM to RW22

RW22

*1080

ZISOL 1900

HOBUV

4 NM Holding Pattern

044° → 2600

← 224°

GP 3.00° TCH 40

CATEGORY	A	B	C	D
LPV DA	533-7/8 257 (300-7/8)			
LNAV/VNAV DA	853-2 577 (600-2)			
LNAV MDA	780-1 504 (600-1)	780-1 3/8 504 (600-1 3/8)		
CIRCLING	1000-1 724 (800-1)	1000-2 724 (800-2)	1380-3 1104 (1200-3)	