

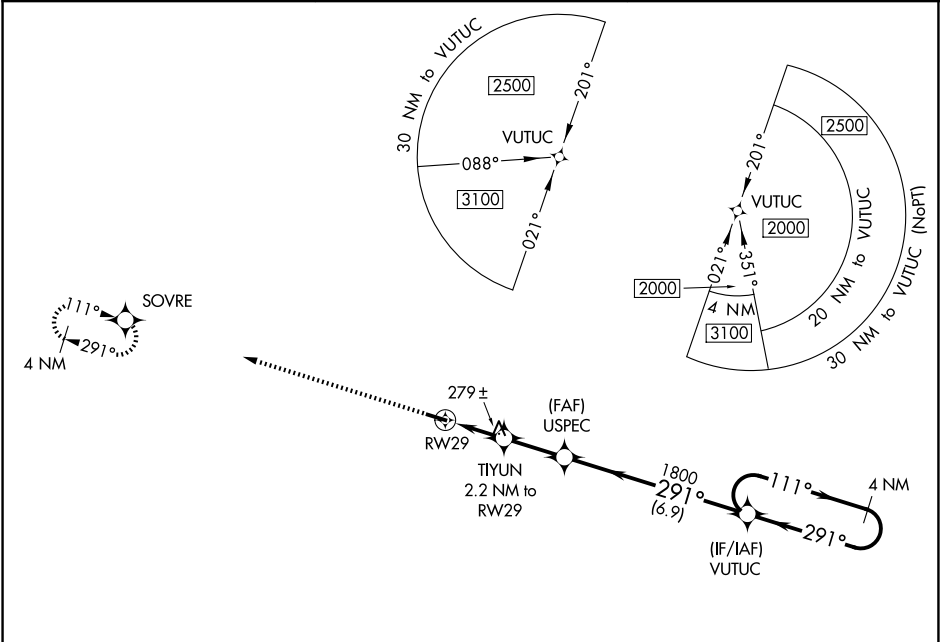
APP CRS	Rwy Ldg	3998
291°	TDZE	100
	Apt Elev	100

RNAV (GPS) RWY 29

GENEVA MUNI (33J)

<div><div>▼</div><div>▲ NA</div></div> <div>DME/DME RNP-0.3 NA. Procedure NA at night. Use Cairns AAF altimeter setting, when not received, use Dothan altimeter setting and increase all MDA 40 feet, and increase all Cat C visibilities ¼ SM. Rwy 29 helicopter visibility reduction below 1 SM NA.</div>	MISSED APPROACH: Climb to 2000 direct SOVRE and hold.
--	--

KOZR ATIS 111.2 316.15	CAIRNS APP CON ★ 133.75 270.35	UNICOM 122.8 (CTAF) 0
---------------------------	-----------------------------------	--------------------------



ELEV 100	TDZE 100
----------	----------

