

| | | | |
|--|------------------------|---|-------------|
| WAAS CH 70735 W11A | APP CRS 111° | Rwy Ldg TDZE 100 Apt Elev 100 | 3998 |
|--|------------------------|---|-------------|

RNAV (GPS) RWY 11

GENEVA MUNI (33J)

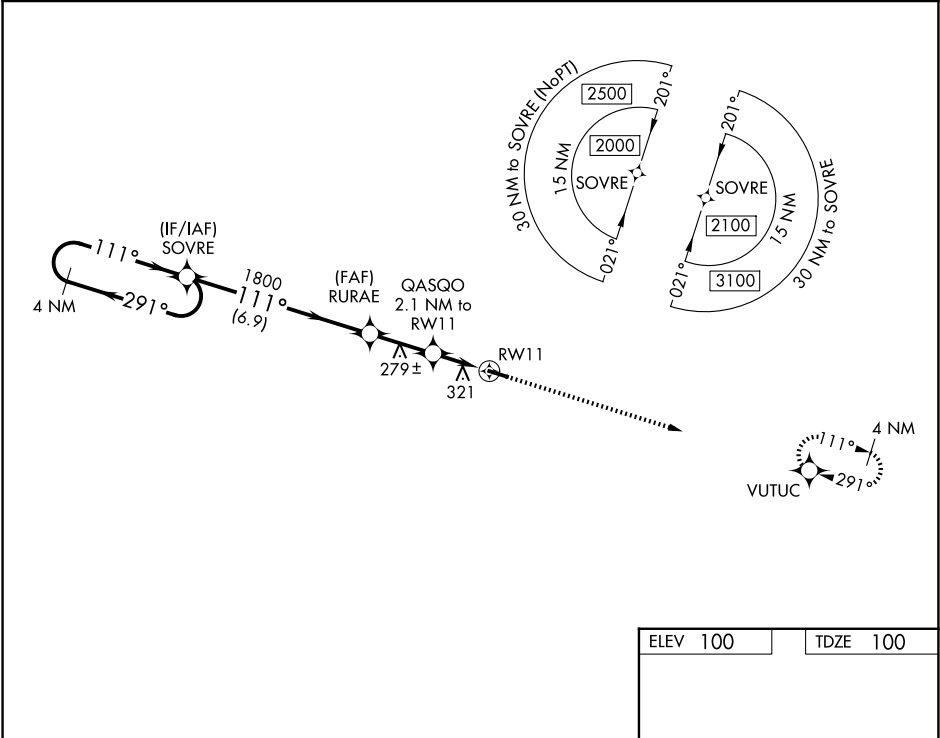
▼

NA

DME/DME RNP-0.3 NA. Procedure NA at night. Rwy 11 helicopter visibility reduction below 1 SM NA. Use Cairns AAF altimeter setting, when not received, use Dathan altimeter setting and increase all MDA 40 feet, increase LP and LNAV Cat C visibility ¼ SM and Circling Cat C visibility ¼ mile.

MISSED APPROACH: Climb to 2000 direct VUTUC and hold.

| | | |
|----------------------------------|--|---------------------------------|
| KOZR ATIS 111.2 316.15 | CAIRNS APP CON ★ 133.75 270.35 | UNICOM 122.8 (CTAF) 0 |
|----------------------------------|--|---------------------------------|



4 NM Holding Pattern

2000

SOVRE

RURAE

QASQO

RW11

2000

VUTUC

111°

291°

3998 X 100

291°

| | | | | |
|----------|----------------------|----------------------|------------------------|----|
| | 6.9 NM | 2.4 NM | 2.1 NM | |
| CATEGORY | A | B | C | D |
| LP MDA | 600-1 | 500 (500-1) | 600-1⅓ 500 (500-1⅓) | NA |
| LNAV MDA | 640-1 | 540 (600-1) | 640-1½ 540 (600-1½) | NA |
| CIRCLING | 700-1 600 (600-1) | 720-1 620 (700-1) | 900-2¼ 800 (800-2¼) | NA |

MIRL Rwy 11-29 0