
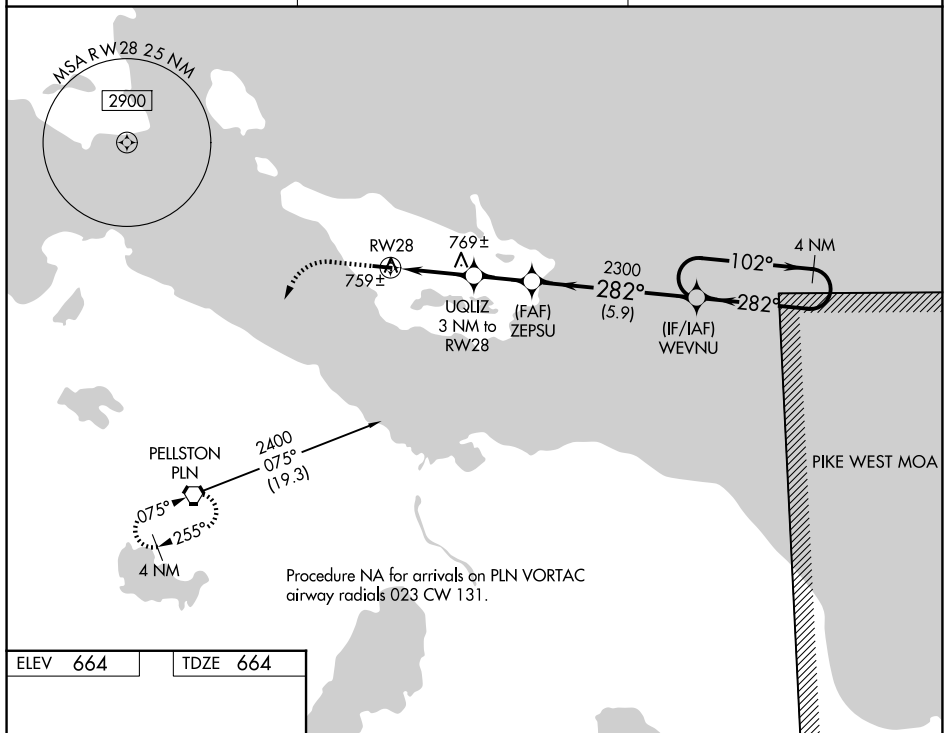


WAAS CH 42735 W28A	APP CRS 282°	Rwy Ldg 3498 TDZE 664 Apt Elev 664
--	------------------------	---

RNAV (GPS) RWY 28
BOIS BLANC ISLAND (6Y1)

 NA	Use Cheboygan alimeter setting; when not received, Mackinac Island alimeter setting. DME/DME RNP-0.3 NA.		MISSED APPROACH: Climb to 3000 direct PELLSTON VORTAC and hold.
	SLH AWOS-3 118.175	MINNEAPOLIS CENTER 134.6 354.05	CTAf 122.9 0



RWY 28 Approach Procedure

- Initial Descent:** 3000 ft, 282° heading.
- ZPSU (Zephyrus):** 3 NM from RWY 28, 1620 ft altitude.
- UQIZ (Unmanned Aircraft System):** 3 NM to RWY 28, 2.1 NM from ZEPUS.
- ZEPUS (Zephyrus):** 2.1 NM from UQIZ, 5.9 NM from WEVNU.
- WEVNU (Waypoint):** 5.9 NM from ZEPUS.
- Holding Pattern:** 4 NM from WEVNU, 102° heading.

CATEGORY	A	B	C	D
LP MDA	1040-1	376 (400-1)	NA	
LNAV MDA	1060-1	396 (400-1)	NA	
CIRCLING	1120-1	456 (500-1)	NA	