

APP CRS
009°

Rwy Idg
TDZE
Apt Elev
106

N/A
N/A
106

RNAV (GPS)-A
UMATILLA MUNI (X23)

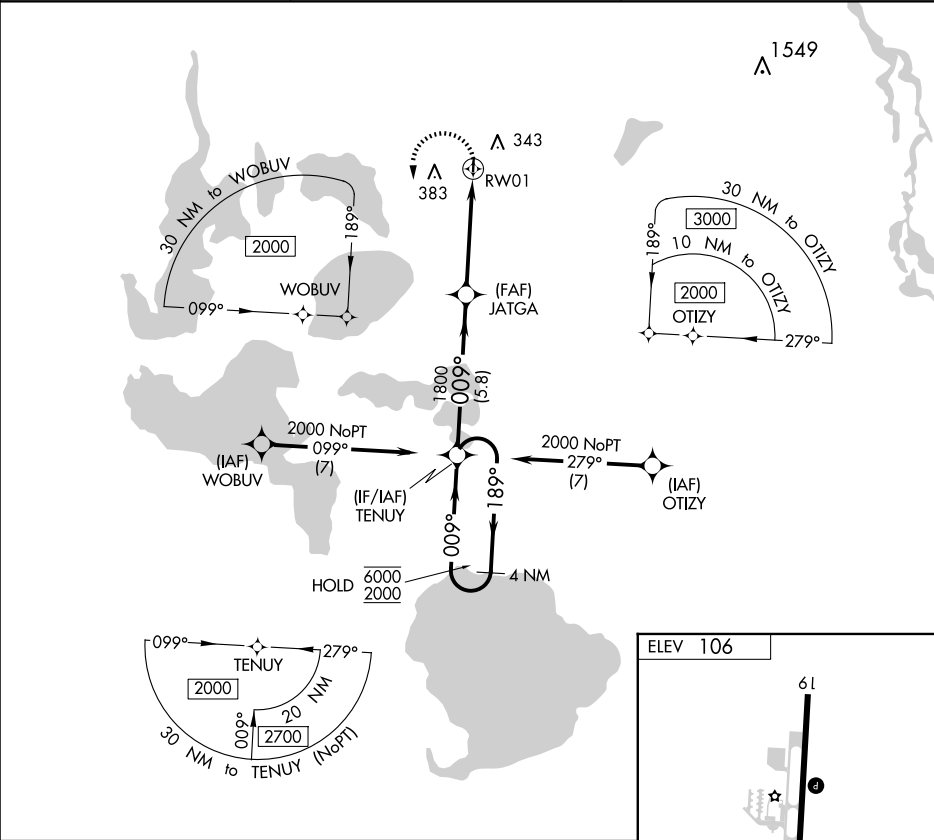
RNP APCH - GPS.

Procedure NA at night. Rwy 01, 19 helicopter visibility reduction below 1 SM NA.

NA Use Leesburg altimeter setting.

MISSED APPROACH: Climbing left turn to 2000 direct TENUY and hold.

LEE ASOS 134.325	ORLANDO APP CON 135.3 351.9	CTAF 122.9
----------------------------	---------------------------------------	----------------------



4 NM Holding Pattern

TENUY

6000 ← 189°

2000 → 009°

JATGA

1800

3.50° TCH 40

RW01

5.8 NM

4.5 NM

2000

TENUY

CATEGORY	A	B	C	D
CIRCLING	760-1 654 (700-1)	780-1 674 (700-1)	NA	

MIRL Rwy 1-19