

WAAS CH 82344 W09A	APP CRS 094°	Rwy Ldg TDZE Apt Elev	3841 398 404
--	------------------------	-----------------------------	---

RNAV (GPS) RWY 9

FULTON (1M7)

RNP APCH - GPS.

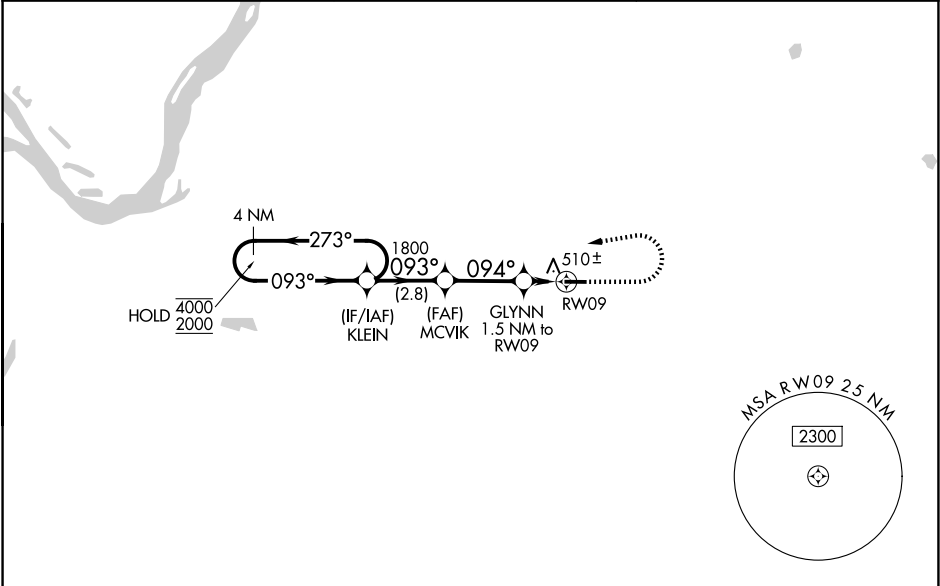
▼

▲ NA

Circling NA south of Rwy 9-27. Circling Rwy 27 NA at night. Rwy 9 helicopter visibility reduction below ¾ SM NA. Baro-VNAV NA. Use Union City altimeter setting; when not received, use Mayfield altimeter setting and increase LPV DA to 720, LNAV/VNAV DA to 759, and increase all MDAs 40 feet.

MISSED APPROACH: Climb to 900 then climbing left turn to 2000 direct KLEIN and hold.

UCY AWOS-3 135.325	MEMPHIS CENTER 133.65 292.15	UNICOM 122.7 (CTAF) 0
------------------------------	--	---------------------------------



ELEV 404	D	TDZE 398
----------	----------	----------

4 NM Holding Pattern

VGSI and RNAV glidepath not coincident (VGSI Angle 3.00/TCH 35).

4000
2000

←273°
093°→

093°

1800

MCVIK

1800

GLYNN
1.5 NM to
RW09

900

094°

1800

2.8 NM

2.8 NM

1.5 NM

RW09

GP 3.00°
TCH 40

900

2000

KLEIN

CATEGORY	A	B	C	D
LPV DA	682-1	284 (300-1)		NA
LNAV/VNAV DA	721-1	323 (400-1)		NA
LNAV MDA	800-1	402 (400-1)		NA
CIRCLING	920-1 516 (600-1)	1000-1 596 (600-1)		NA

