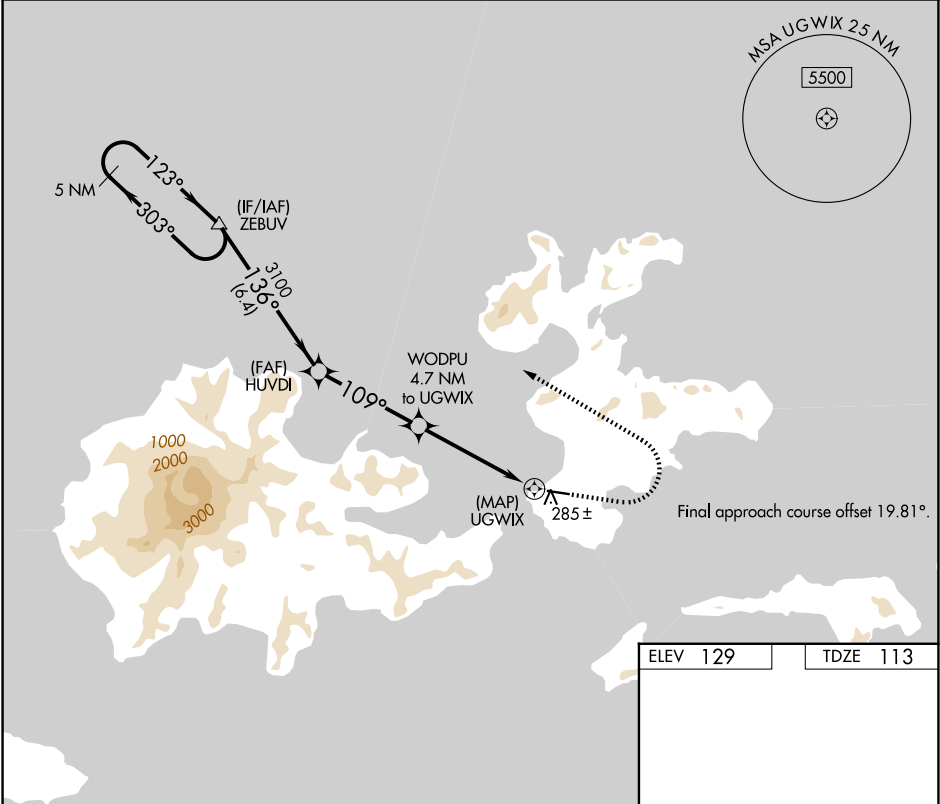


APP CRS	Rwy Ldg	4500
109°	TDZE	113
	Apt Elev	129

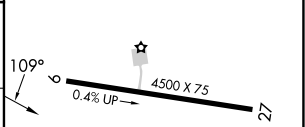
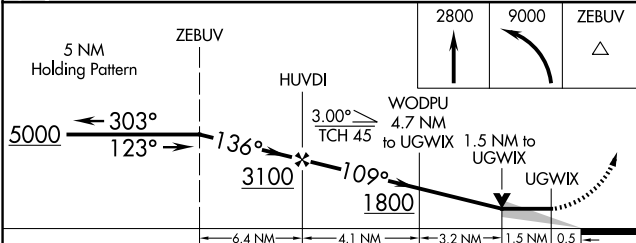
RNAV (GPS) RWY 9

AKUTAN (7AK)(PAUT)

<div><div></div><div></div></div> DME/DME RNP-0.3 NA. Procedure NA at night.		MISSED APPROACH: Climb to 2800 then climbing left turn to 9000 direct ZEBUV and hold, continue climb-in-hold to 9000.	
AWOS-3P 129.05	ANCHORAGE CENTER 121.4	GCO 130.3	CTAF 122.9 <div></div>



ELEV 129	TDZE 113
----------	----------



CATEGORY	A	B	C	D
LNAV MDA	780-1	667 (700-1)	780-1 7/8	667 (700-1 7/8)
CIRCLING	1020-1 1/4 891 (900-1 1/4)	1200-1 1/2 1071 (1100-1 1/2)	1600-3 1471 (1500-3)	1960-3 1831 (1900-3)

MIRL Rwy 9-27

AK, 07 AUG 2025 to 02 OCT 2025

AK, 07 AUG 2025 to 02 OCT 2025