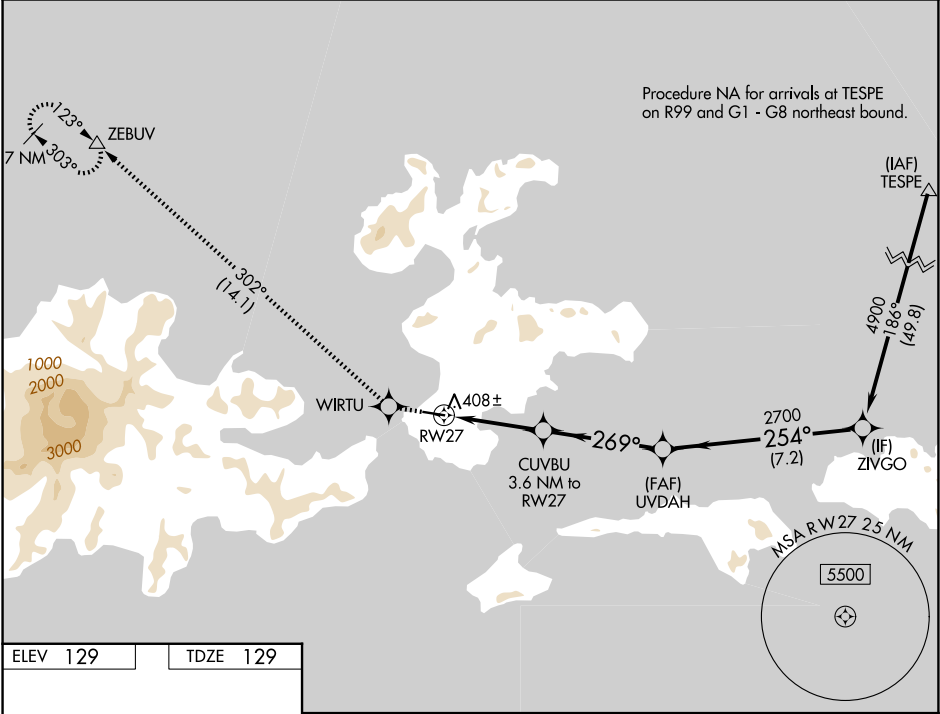


APP CRS	Rwy Ldg	4500
269°	TDZE	129
	Apt Elev	129

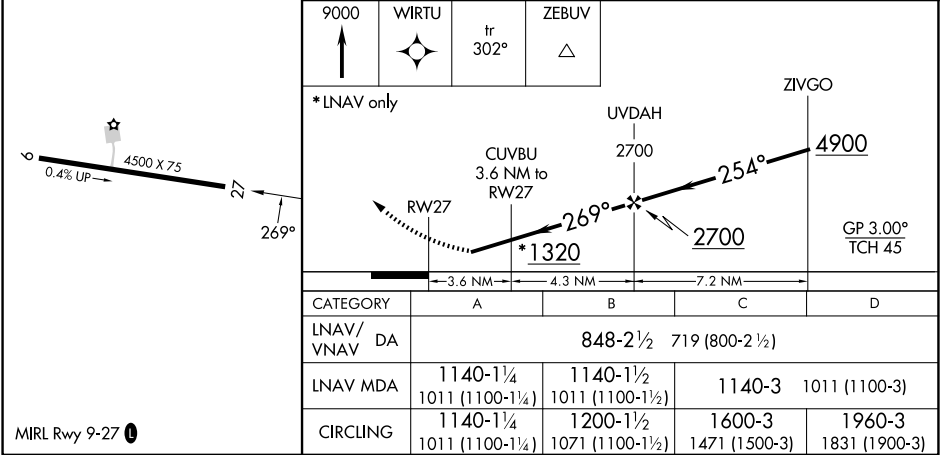
RNAV (GPS) RWY 27
AKUTAN (7AK)(PAUT)

<p>For uncompensated Baro-VNAV systems, LNAV/VNAV NA below -19°C (-2°F) or above 54°C (130°F). DME/DME RNP-0.3 NA. Visibility reduction by helicopters below 1 SM NA. Procedure NA at night.</p>	MISSED APPROACH: Climb to 9000 direct WIRTU and on track 302° to ZEBUV and hold, continue climb-in-hold to 9000.
--	--

AWOS-3P 129.05	ANCHORAGE CENTER 121.4	GCO 130.3	CTAF 122.9
-------------------	---------------------------	--------------	---------------



ELEV 129	TDZE 129
----------	----------



AK, 07 AUG 2025 to 02 OCT 2025

AK, 07 AUG 2025 to 02 OCT 2025