

WAAS  
CH **65644**  
**W26A**

APP CRS  
**260°**

Rwy Ldg  
TDZE  
**3015**  
Apt Elev  
**3025**

**RNAV (GPS) RWY 26**

BIG HORN COUNTY (ØØU)

RNP APCH-GPS.

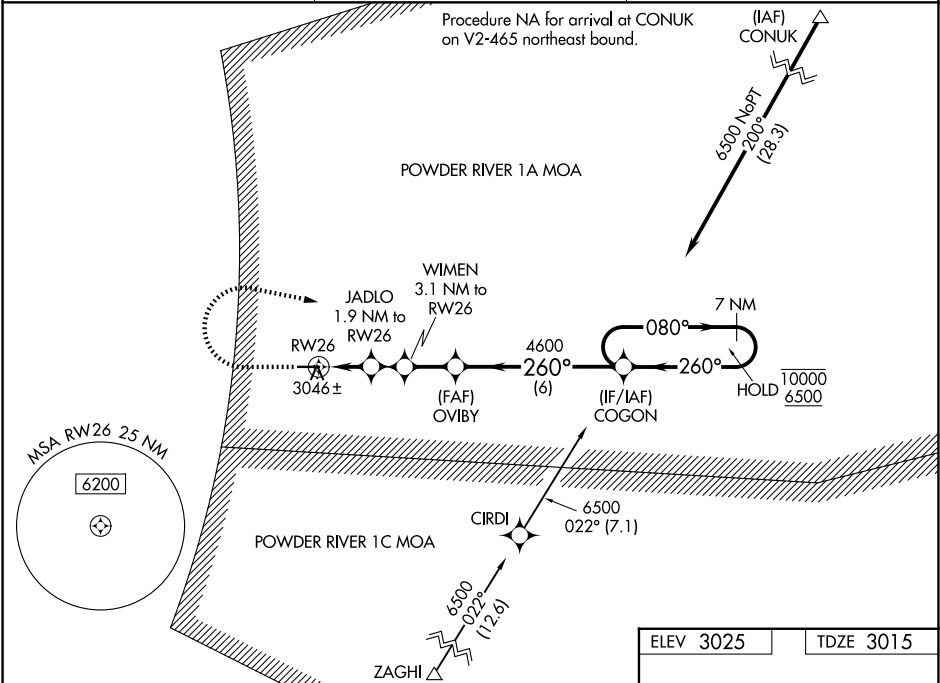
▼

▲

For uncompensated Baro-VNAV systems, LNAV/VNAV NA below -20°C or above 54°C.

MISSED APPROACH: Climb to 3700 then climbing right turn to 6500 direct COGON and hold, continue climb-in-hold to 6500.

AWOS-3 <b>118.325</b>	SALT LAKE CENTER <b>132.425 317.45</b>	UNICOM <b>122.8 (CTAF) Ø</b>
--------------------------	---	---------------------------------



3700

6500

COGON

↑

↻

✦

JADLO 1.9 NM to RWY 26

WIMEN 3.1 NM to RWY 26

OVBY 4600

COGON 7 NM Holding Pattern

0.8 NM RWY 26 to RWY 26

3640

4020

4600

10000

6500

GP 3.00°

TCH 40

CATEGORY	A	B	C	D
LPV DA	3215-1	200 (200-1)		NA
LNAV/VNAV DA	3265-1	250 (300-1)		NA
LNAV MDA	3300-1	285 (300-1)		NA
CIRCLING	3480-1 455 (500-1)	3500-1 475 (500-1)		NA

ELEV 3025

TDZE 3015

MIRL Rwy 8-26 Ø