

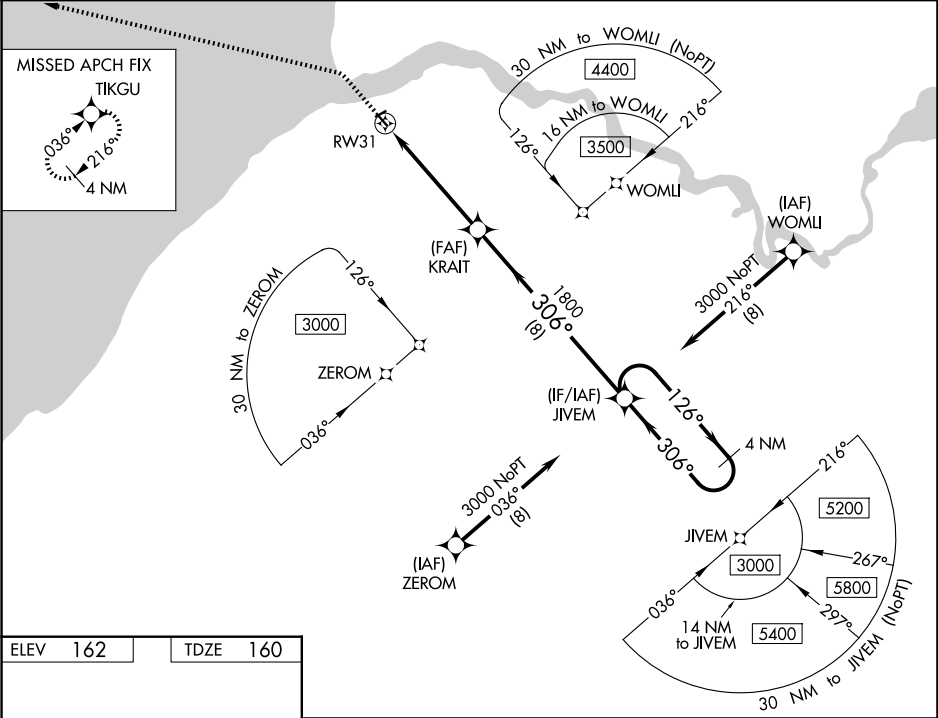
WAAS CH 87137 W31B	APP CRS 306°	Rwy Ldg 2755 TDZE 160 Apt Elev 162
--	------------------------	---

RNAV (GPS) RWY 31

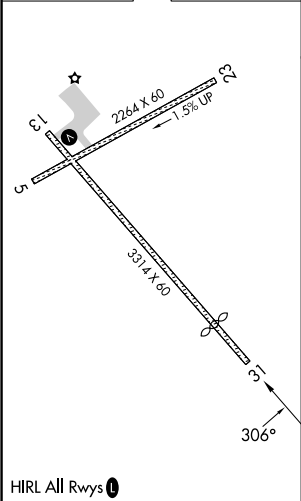
SOUTH NAKNEK NR 2 (WSN)(PFWS)




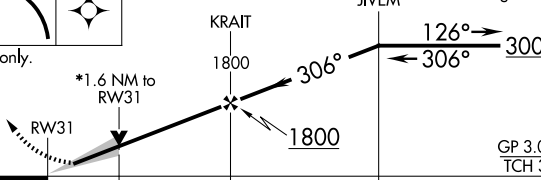
RNP APCH.	MISSED APPROACH: Climb to 700 then climbing left turn to 3200 direct TIKGU and hold.
▼ Baro-VNAV and VDP NA when using King Salmon altimeter setting. For uncompensated Baro-VNAV systems, LNAV/VNAV NA below -21°C or above 54°C. When local altimeter setting not received, use King Salmon altimeter setting and increase all DA/MDA 40 feet. Circling Rwy 5 NA at night.	

AWOS-3P 121.575	ANCHORAGE CENTER 124.8 354.0	CTAF 122.9 0
---------------------------	--	------------------------



ELEV 162	TDZE 160
----------	----------



700	3200	TIKGU	4 NM Holding Pattern				
							
*LNAV only.						GP 3.00° TCH 35	
CATEGORY		A	B	C	D		
LPV	DA	410-1	250 (300-1)	NA			
LNAV/ VNAV	DA	410-1	250 (300-1)	NA			
LNAV	MDA	700-1	540 (600-1)	NA			
CIRCLING		700-1	538 (600-1)	NA			