

APP CRS	Rwy Ldg	N/A
324°	TDZE	N/A
	Apt Elev	1275

## RNAV (GPS)-A HEALY RIVER (HRR) (PAHV)

RNP APCH - GPS.

**T** Procedure NA at night. Rwy 15 and 33 helicopter visibility  
**A** NA reduction below 1 SM NA. Use McKinley Park altimeter  
**☼** -14°C setting; when not received, procedure NA.

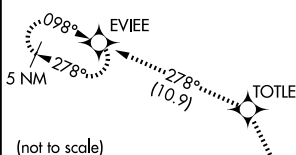
**MISSED APPROACH:** Climb to 5800 direct TOTLE and on track 278° to EVIEE and hold.

INR/PAIN AWOS-3P  
**135.75**

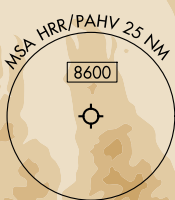
ANCHORAGE CENTER  
120.9 319.2

CTAF  
122.90

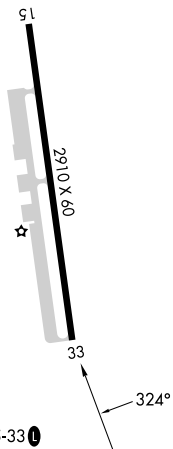
MISSED APCH FIX



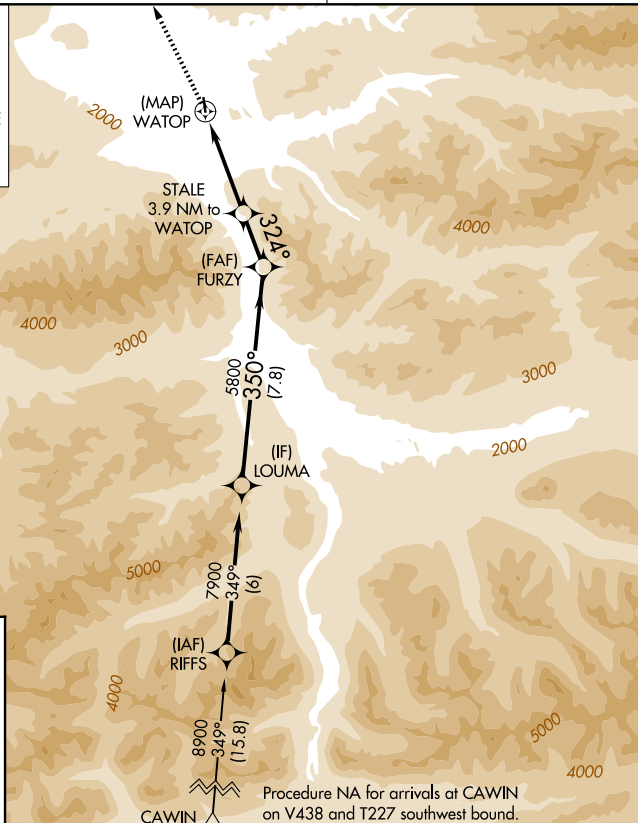
(not to scale)



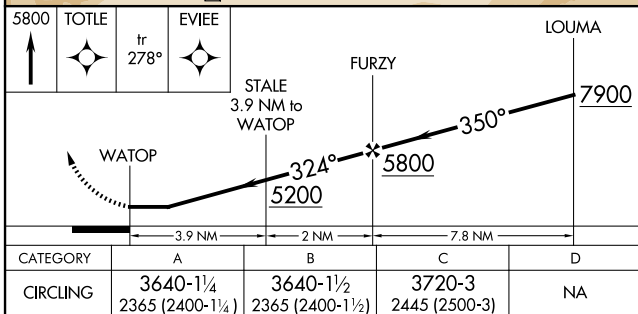
ELEV 1275



HEALY, ALASKA  
Amdt 1 29DEC22



## Procedure NA for arrivals at CAVIN on V438 and T227 southwest bound

HEALY RIVER (HRR) (PAHV)  
RNAV (GPS)-A

63°52'N-148°58'W

AK, 07 AUG 2025 to 02 OCT 2025