



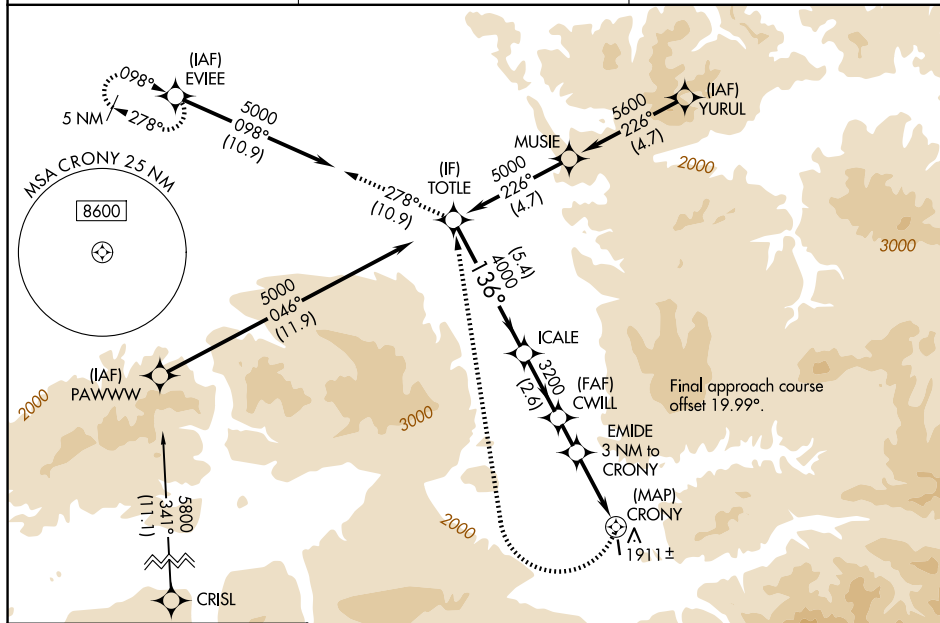
RNAV (GPS) RWY 15

HEALY RIVER (HRR) (PAHV)

MISSED APPROACH: Climbing right turn to 5800
direct TOTLE and on track 278° to EVIEE and hold.
*Missed approach requires minimum climb of 340 feet
per NM to 3100.

 Circling NA northeast of Rwy 15-33. Procedure NA at night. Use
 NA McKinley Park altimeter setting; when not received, procedure
 NA. Rwy 15 helicopter visibility reduction below 1 SM NA.

| | | |
|-----------------------------------|--|-----------------------|
| INR/PAIN AWOS-3P 135.75 | ANCHORAGE CENTER 120.9 319.2 | CTAF 122.90 |
|-----------------------------------|--|-----------------------|



| CATEGORY | A | B | C | D |
|-----------|---------------------------|---------------------------|----|---|
| LP MDA* | 2100-1 825 (900-1) | 2100-1¼ 825 (900-1¼) | NA | |
| LP MDA | 2240-1¼ 965 (1000-1¼) | 2240-1½ 965 (1000-1½) | NA | |
| LNAV MDA* | 2260-1¼ 985 (1000-1¼) | 2260-1½ 985 (1000-1½) | NA | |
| LNAV MDA | 2560-1¼ 1285 (1300-1¼) | 2560-1½ 1285 (1300-1½) | NA | |
| CIRCLING | 2560-1¼ 1285 (1300-1¼) | 2560-1½ 1285 (1300-1½) | NA | |

AK, 07 AUG 2025 to 02 OCT 2025