

WAAS CH <b>42744</b> <b>W34A</b>	APP CRS <b>343°</b>	Rwy Ldg <b>4700</b> TDZE <b>5365</b> Apt Elev <b>5374</b>
--	------------------------	---

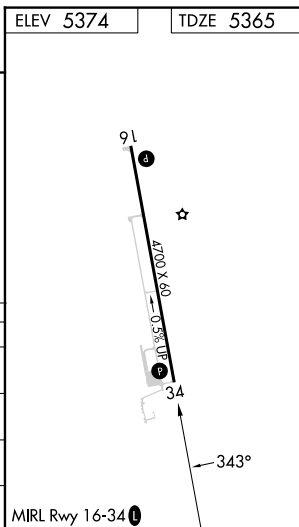
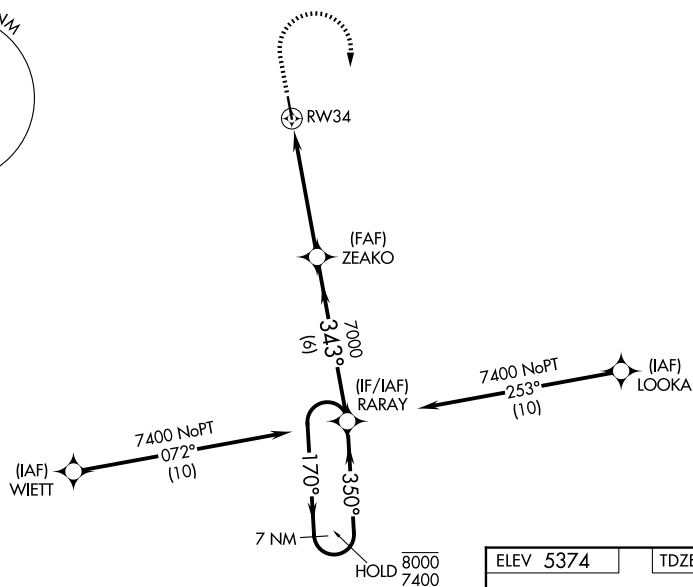
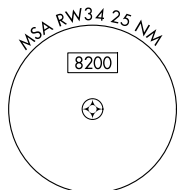
RNAV (GPS) RWY 34  
LIMON MUNI (LIC)

RNP APCH - GPS.

**T** For uncompensated Baro-VNAV systems, LNAV/VNAV NA below -25°C or above 54°C. Rwy 34 helicopter visibility reduction below ¾ SM NA. Baro-VNAV and VDP NA when using CFO altimeter setting. When local altimeter not received, use CFO altimeter setting and increase LPV DA to 5751 feet and all visibilities ½ SM. Increase LNAV/VNAV DA to 5960 feet and all visibilities ¾ SM. Increase all MDAs 140 feet and LNAV visibility Cat B/C ¾ SM, and Circling visibility Cat B/C ½ SM.

**MISSED APPROACH:** Climb to 6400, then climbing right turn to 7400 direct RARAY and hold.

ASOS <b>121.125</b>	DENVER CENTER <b>133.4 377.175</b>	CTAF <b>122.9 0</b>
------------------------	---------------------------------------	------------------------



RNAV (GPS) RWY 34