

WAAS CH 56344 W16A	APP CRS 163°	Rwy Ldg TDZE 5374 Apt Elev 5374
--	------------------------	---

RNAV (GPS) RWY 16

LIMON MUNI (LIC)

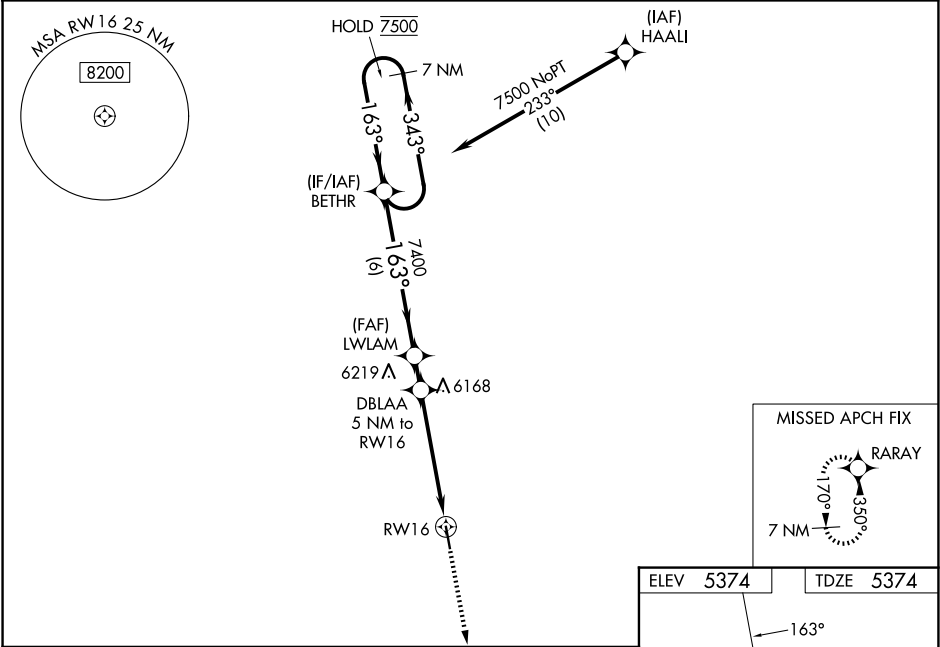
RNP APCH - GPS.

⚠

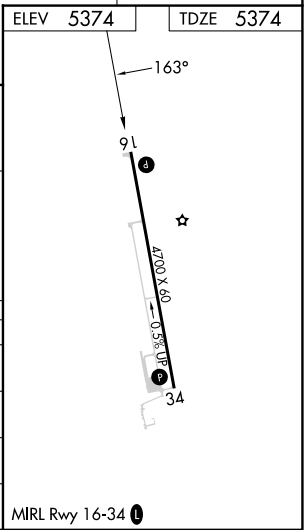
For uncompensated Baro-VNAV systems, LNAV/VNAV NA below -25°C or above 54°C. Baro-VNAV and VDP NA when using CFO altimeter setting. When local altimeter setting not received, use CFO altimeter setting and increase LPV DA to 5760 feet and all visibilities 1⁄8 SM. Increase LNAV/VNAV DA to 5845 feet and all visibilities 3⁄8 SM. Increase all MDAs 140 feet and LNAV visibilities Cat B/C 1⁄2 SM, and Circling all visibilities 1⁄2 SM.

MISSED APPROACH: Climb to 7500
direct RARAY and hold.

ASOS 121.125	DENVER CENTER 133.4 377.175	CTAF 122.9
------------------------	---------------------------------------	----------------------



7 NM Holding Pattern		BETHR	LWLAM	DBLAA 5 NM to RW16	7500	RARAY
GP 3.00° TCH 39						
		6 NM	1.3 NM	2.9 NM	2.1 NM	
CATEGORY		A	B	C	D	
LPV DA		5624-1	250 (300-1)		NA	
LNAV/VNAV DA		5709-1	335 (400-1)		NA	
LNAV MDA		6080-1	706 (800-1)	6080-2 706 (800-2)	NA	
CIRCLING		6080-1	706 (800-1)	6220-2 1⁄2 846 (900-2 1⁄2)	NA	



SW-1, 07 AUG 2025 to 04 SEP 2025

SW-1, 07 AUG 2025 to 04 SEP 2025