

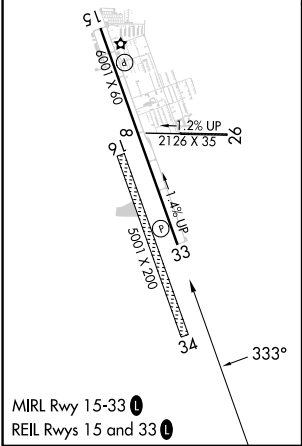
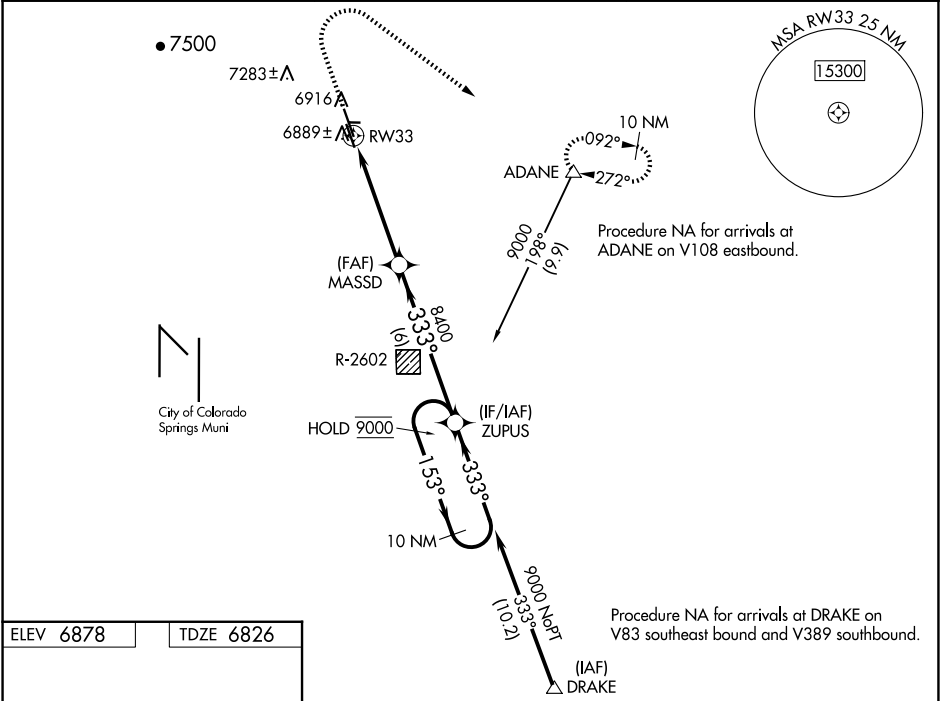
WAAS CH <b>90146</b> <b>W33A</b>	APP CRS <b>333°</b>	Rwy Idg TDZE <b>6826</b> Apt Elev <b>6878</b>	<b>6001</b>
--	------------------------	---	-------------

RNAV (GPS) RWY 33

MEADOW LAKE (F'L Y)

RNP APCH - GPS. ⚠ For uncompensated Baro-VNAV systems, LNAV/VNAV NA below -28°C or above 54°C. Circling NA Rwy 16, 8, 26 and 34. Circling Rwy 15 NA at night. Circling NA southwest of Rwy 15-33.	MISSED APPROACH: Climb to 7300, then climbing right turn to 9000 direct ADANE and hold, continue climb-in-hold to 9000.
--	---

AWOS-3PT <b>118.45</b>	SPRINGS APP CON <b>124.0 257.875</b>	UNICOM <b>122.7 (CTAF) 0</b>
---------------------------	---	---------------------------------



7300	9000	ADANE	ZUPUS	10 NM Holding Pattern
↑	↻	△	MASSD	153° → 9000
			8400	← 333°
			8400	
			1 NM	GP 3.00° TCH 40
			4 NM	
			6 NM	
CATEGORY	A	B	C	D
LPV DA	7026-3/4	200 (200-3/4)	NA	NA
LNAV/VNAV DA	7079-3/4	253 (300-3/4)	NA	NA
LNAV MDA	7140-1	314 (300-1)	NA	NA
CIRCLING	7340-1 462 (500-1)	7440-1 562 (600-1)	NA	NA

SW-1, 07 AUG 2025 to 04 SEP 2025

SW-1, 07 AUG 2025 to 04 SEP 2025