

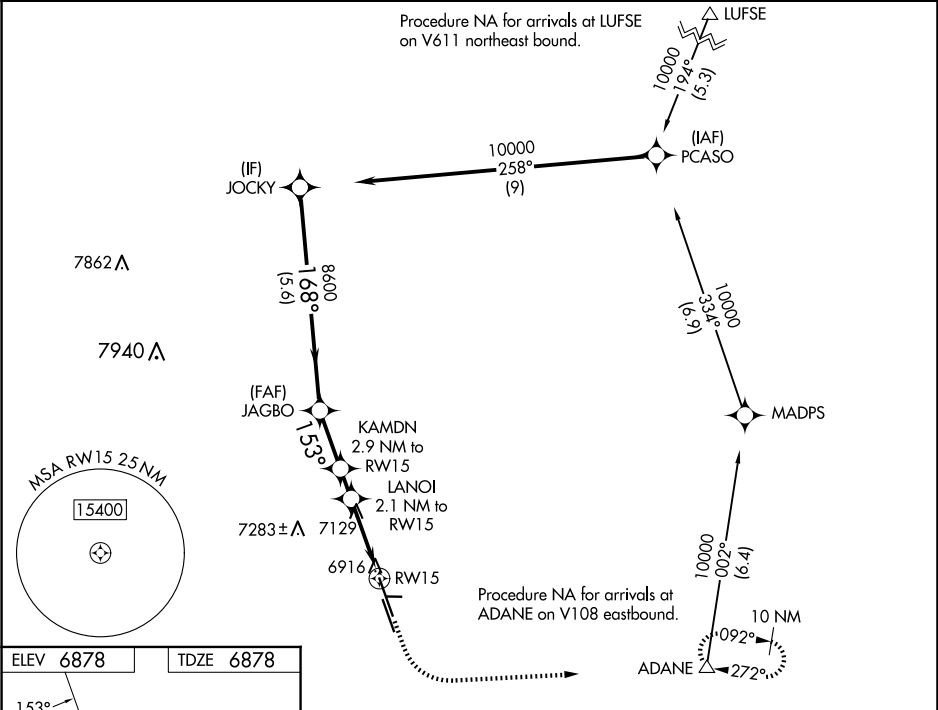
WAAS CH 50146 W15A	APP CRS 153°	Rwy ldg TDZE Apt Elev	6001 6878 6878
--	------------------------	-----------------------------	---

RNAV (GPS) RWY 15

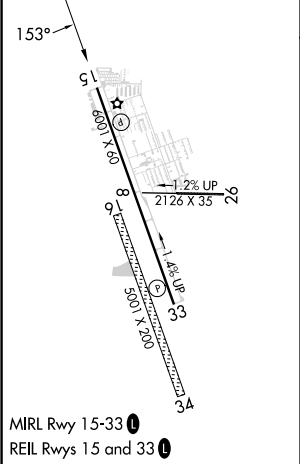
MEADOW LAKE (F.L.Y.)

RNP APCH - GPS.	MISSED APPROACH: Climb to 7400, then climbing left turn to 9800 direct ADANE and hold, continue climb-in-hold to 9800.
-----------------	--

AWOS-3PT 118.45	SPRINGS APP CON 124.0 257.875	UNICOM 122.7 (CTAF) ①
---------------------------	---	---------------------------------



ELEV 6878	TDZE 6878
------------------	------------------



JOCKY		VGSI and RNAV glidepath not coincident (VGSI Angle 3.50/TCH 42).		7400	9800	ADANE
10000		JAGBO		8600	8020	7720
GP 3.50°		KAMDN 2.9 NM to RW15		LANOI 2.1 NM to RW15		RW15
TCH 59		5.6 NM		1.6 NM		0.8 NM
CATEGORY	A	B	C	D		
LPV DA	7176-1	298 (300-1)	NA			
RNAV/VNAV DA	7343-1 3/8	465 (500-1 3/8)	NA			
RNAV MDA	7400-1	522 (600-1)	NA			
CIRCLING	7400-1 522 (600-1)	7440-1 562 (600-1)	NA			