

APP CRS  
354°

Rwy Idg  
TDZE  
Apt Elev

3000  
48  
48

RNAV (GPS) RWY 35

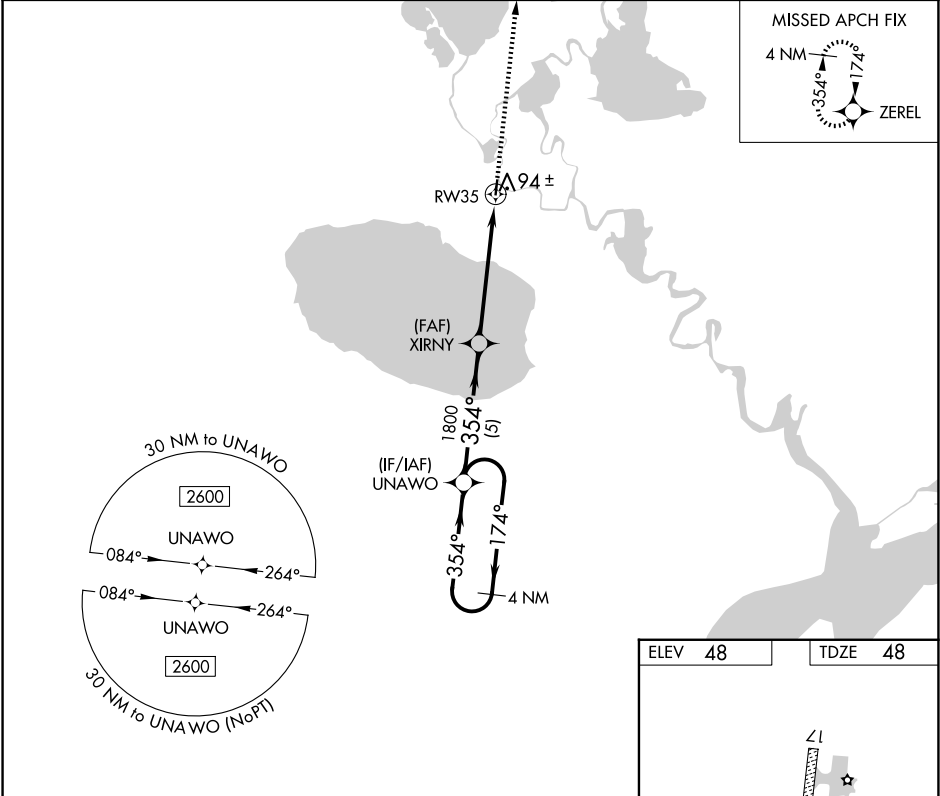
KASIGLUK (ZØ9) (PFKA)

NA

DME/DME RNP-0.3 NA. Use Nunapitchuk altimeter setting, when not received, use Bethel altimeter setting.

MISSED APPROACH: Climb to 2500 direct ZEREL and hold.

16A/PPIT AWOS-3P 121.55	BET/PABE ASOS 135.45	ANCHORAGE CENTER 125.2 372.0	CTAF 122.9 0
----------------------------	-------------------------	---------------------------------	-----------------



UNAWO

4 NM Holding Pattern

2600

174°

354°

354°

XIRNY

1800

3.00°

TCH 40

RW35

5 NM

5.4 NM

2500

ZEREL

ELEV 48

TDZE 48

3000 X 60

0.7% UP

35

354°

MIRL Rwy 17-35 0

CATEGORY	A	B	C	D
LNAV MDA	680-1	632 (700-1)	NA	NA
CIRCLING	720-1	672 (700-1)	NA	NA