

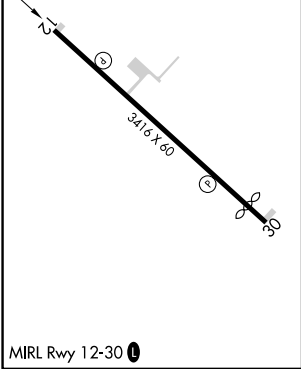
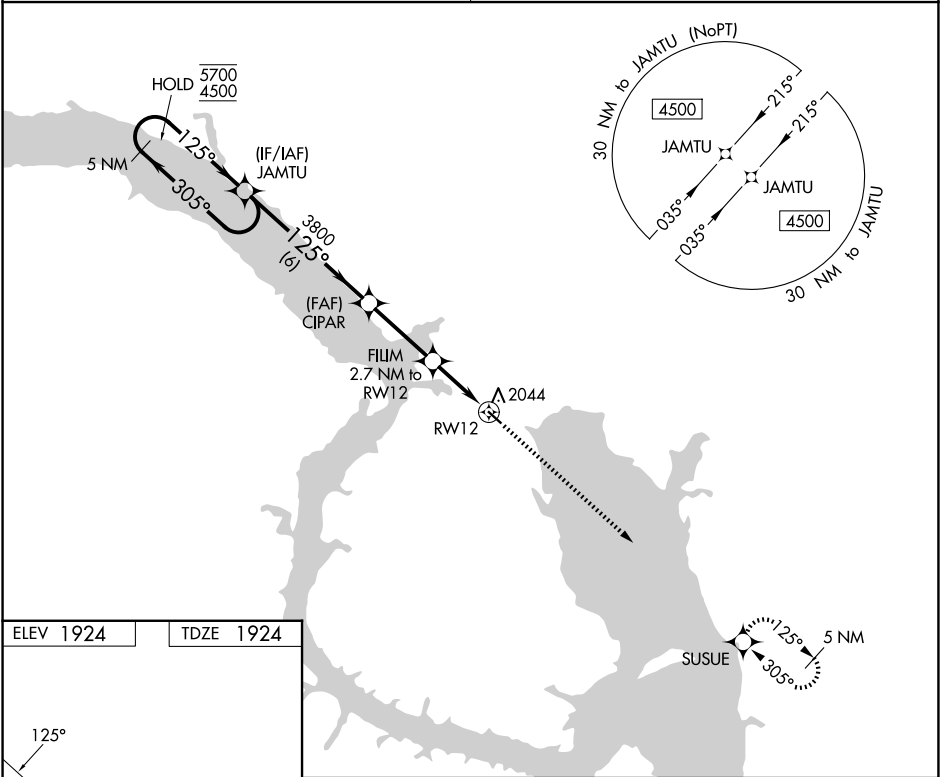
APP CRS	Rwy Ldg	3416
125°	TDZE	1924
	Apt Elev	1924

# RNAV (GPS) RWY 12

NEW TOWN MUNI (Ø5D)

RNP APCH.	MISSED APPROACH: Climb to 4500 direct SUSUE and hold.
▼ ▲ NA	Use Stanley altimeter setting, when not received, use Tioga altimeter setting and increase all MDAs 40 feet. Increase Cat C visibilities ¼ SM. Rwy 12 helicopter visibility reduction below ¾ SM NA.

MINNEAPOLIS CENTER 127.6 279.6	CTAF 122.9 0
-----------------------------------	-----------------



JAMTU				4500	SUSUE
5 NM Holding Pattern				↑	✧
5700 ← 305° 4500 → 125°					
3800					
CIPAR					
3.00' TCH 40					
2800					
FILM 2.7 NM to RWY 12					
RWY 12					
6 NM					
3.1 NM					
2.7 NM					
CATEGORY	A	B	C	D	
LNAV MDA	2440-1	516 (600-1)	2440-1 3/8 516 (600-1 3/8)	NA	
CIRCLING	2520-1 596 (600-1)	2620-1 696 (700-1)	2780-2 1/2 856 (900-2 1/2)	NA	