

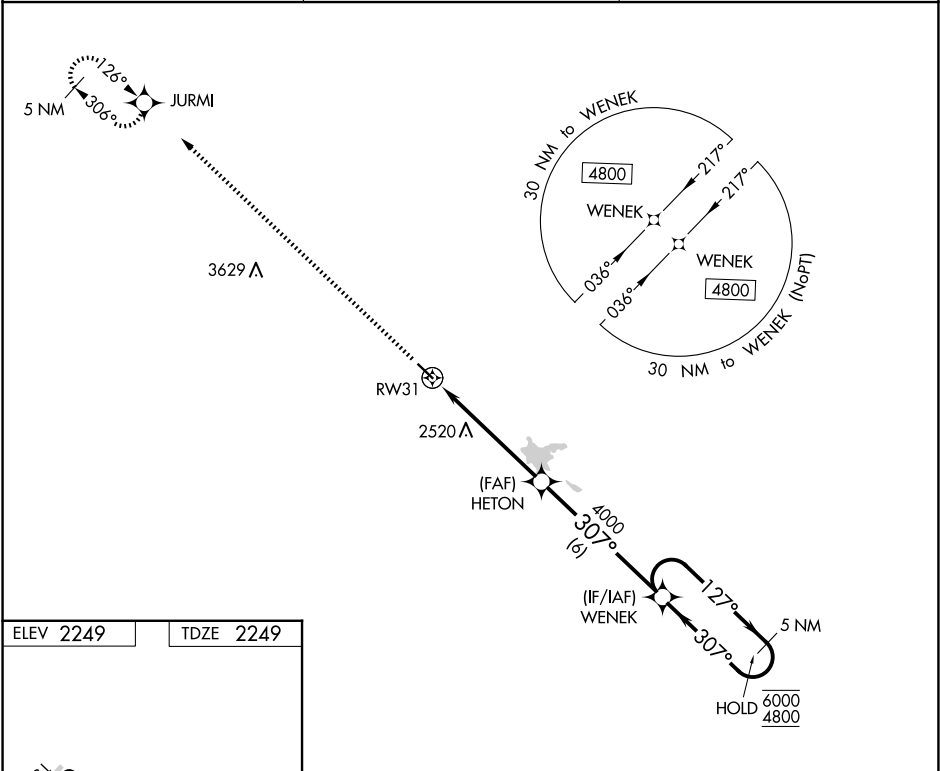
APP CRS	Rwy Ldg	4200
307°	TDZE	2249
	Apt Elev	2249

RNAV (GPS) RWY 31

DUNN COUNTY WEYDAHL FLD (9Y1)

RNP APCH.	MISSED APPROACH: Climb to 4800 direct JURMI and hold.
▼ ▲ NA	Use Watford City altimeter setting, when not received, use Dickinson altimeter setting: increase all MDA's 40 feet and visibility Cat B ¼ SM; increase Circling visibility Cat C ¼ SM.

AWOS-3PT 118.525	MINNEAPOLIS CENTER 124.25 236.825	CTAF 122.9 0
---------------------	--------------------------------------	-----------------



ELEV 2249	TDZE 2249				
4800	JURMI	HETON	WENEC	5 NM Holding Pattern	
↑	✧	≤ 3.00° TCH 40	307°	127° → 6000	← 307° 4800
RW31	5.4 NM	6 NM			
CATEGORY	A	B	C	D	
LNAV MDA	2960-1	711 (800-1)	2960-2 711 (800-2)	NA	
CIRCLING	2960-1	711 (800-1)	2960-2 711 (800-2)	NA	

NC-1, 07 AUG 2025 to 04 SEP 2025

NC-1, 07 AUG 2025 to 04 SEP 2025