

WAAS CH <b>81840</b> <b>W18A</b>	APP CRS <b>178°</b>	Rwy Idg <b>4228</b> TDZE <b>779</b> Apt Elev <b>783</b>
--	------------------------	---

RNAV (GPS) RWY 18

SOUTH GRAND LAKE RGNL (1K8)

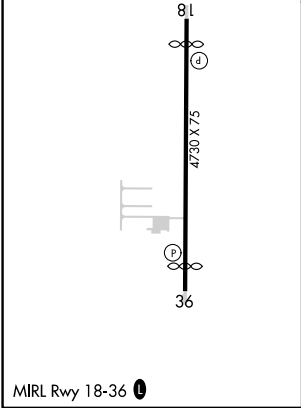
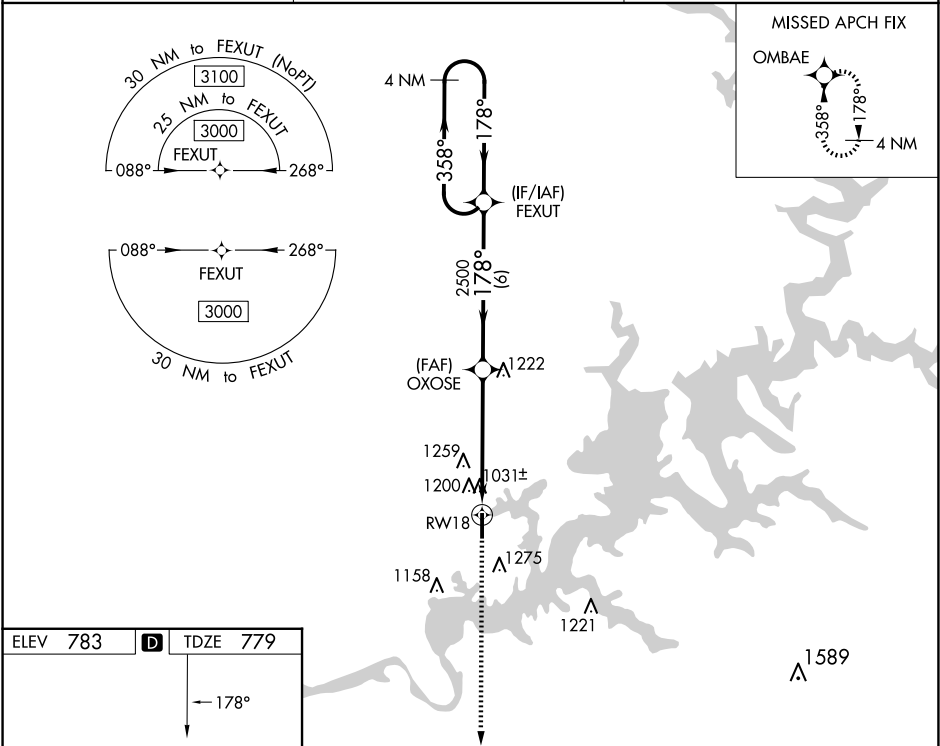
RNP APCH - GPS.

NA

Rwy 18 helicopter visibility reduction below 1 SM NA. When local altimeter setting not received, use Grove altimeter setting. Straight-in Rwy 18 NA at night, Circling Rwy 18 NA at night.

MISSED APPROACH: Climb to 3000 direct OMBAE and hold.

AWOS-3PT <b>118.15</b>	KANSAS CITY CENTER <b>128.6 282.325</b>	CTAF <b>122.9</b>
---------------------------	--	----------------------



3000	OMBAE	Visual Segment - Obstacles.	FEXUT	4 NM Holding Pattern
		OXOSE	358°	3000
		RW18	178°	178°
		2500		
		5.3 NM	6 NM	
CATEGORY	A	B	C	D
LP MDA	1320-1	541 (600-1)	1320-1½ 541 (600-1½)	NA
LNAV MDA	1500-1	721 (800-1)	1500-2 721 (800-2)	NA
<b>C</b> CIRCLING	1540-1 757 (800-1)	1620-1¼ 837 (900-1¼)	1620-2½ 837 (900-2½)	NA

SC-1, 07 AUG 2025 to 04 SEP 2025

SC-1, 07 AUG 2025 to 04 SEP 2025