

WAAS CH <b>90537</b> <b>W03A</b>	APP CRS <b>032°</b>	Rwy Ldg TDZE Apt Elev	<b>5598</b> <b>5157</b> <b>5193</b>
--	------------------------	-----------------------------	---

RNAV (GPS) RWY 3

BLAKE FLD (AJZ)

RNP APCH

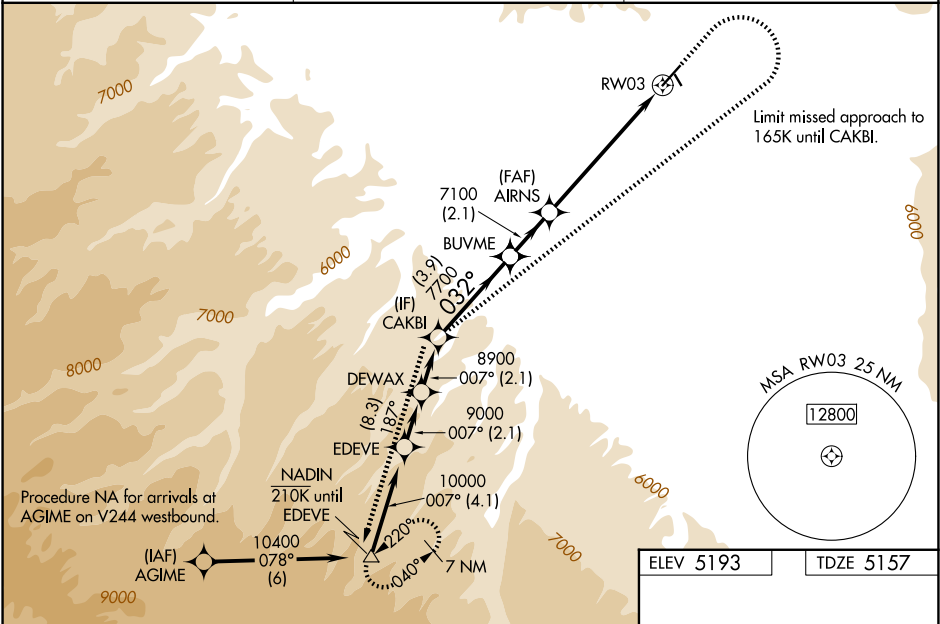
▼

▲

Baro-VNAV NA when using Montrose altimeter setting. For uncompensated Baro-VNAV systems, procedure NA below -25°C or above 54°C. When local altimeter setting not received, use Montrose altimeter setting: increase #LPV DA to 5529 feet and visibility all Cats ¾ SM, increase LPV DA to 5670 feet and visibility all Cats ½ SM, increase LNAV/VNAV DA to 5979 feet and visibility all Cats ½ SM. Increase all MDA 140 feet and visibility Cat B ¼ SM, Cat C ½ SM and Circling Cat A ¼ SM. VDP NA when using Montrose altimeter setting.  
Circling NA to Rwy 14 and 32.  
# Missed approach requires minimum climb of 250 feet per NM to 6900.

MISSED APPROACH: Climb to 7000 then climbing right turn to 11600 direct CAKBI and on track 187° to NADIN and hold, continue climb-in-hold to 11600.

AWOS-3 <b>134.0</b>	DENVER CENTER <b>127.1 343.65</b>	UNICOM <b>122.8 (CTAF) 0</b>
------------------------	--------------------------------------	---------------------------------



CAKBI	BUVME	AIRNS	7000	11600	CAKBI	tr 187°	NADIN
8900	7700	7100	7100	7100	7100	7100	7100
GP 3.00° TCH 38	3.9 NM	2.1 NM	3.9 NM	2.2 NM	2.2 NM	2.2 NM	2.2 NM
CATEGORY	A	B	C	D			
#LPV DA	5407-1	250 (300-1)		NA			
LPV DA	5548-1½	391 (400-1½)		NA			
LNAV/VNAV DA	5857-2	700 (700-2)		NA			
LNAV MDA	5840-1	683 (700-1)	5840-2 683 (700-2)	NA			
CIRCLING	5900-1 707 (800-1)	6340-1½ 1147 (1200-1½)	6680-3 1487 (1500-3)	NA			

