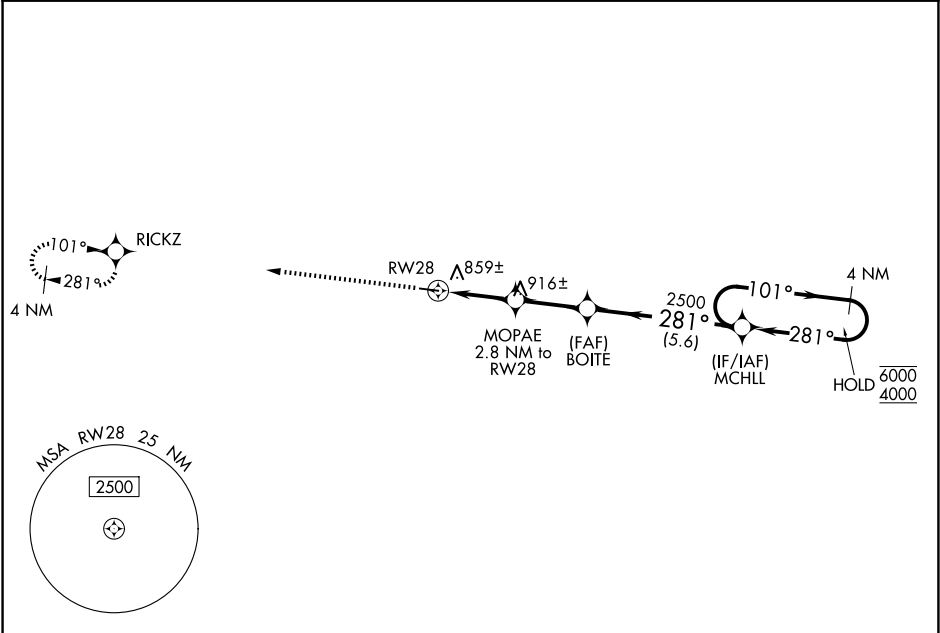


WAAS CH 77842 W28A	APP CRS 281°	Rwy Ldg TDZE Apt Elev	4000 732 732
--	------------------------	-----------------------------	---

RNAV (GPS) RWY 28
BRECKINRIDGE COUNTY (I93)

RNP APCH.	MISSED APPROACH: Climb to 4000 direct RICKZ and hold, continue climb-in-hold to 4000.
▼ NA	Baro-VNAV NA. Use Fort Knox altimeter setting, when not received, use Elizabethtown altimeter setting and increase LPV DA to 1047, LNAV/VNAV DA to 1185 and all MDA 20 feet.

AWOS-3PT 123.625	KFTK ATIS ★ 109.6	LOUISVILLE APP CON 123.675 327.0	CTAF 122.9 0
----------------------------	-----------------------------	--	------------------------



ELEV 732	TDZE 732
----------	----------

MIRL Rwy 10-28
REIL Rwys 10 and 28

4000	RICKZ	VGSI and RNAV glidepath not coincident (VGSI Angle 3.00°/TCH 27°).	4 NM Holding Pattern	
*LNAV only.	BOITE	MCHLL	GP 3.00° TCH 50	
MOPAE 2.8 NM to RWY 28	2500	281°	101°	
1660*	2500			
2.8 NM	2.6 NM	5.6 NM		
CATEGORY	A	B	C	D
LPV DA	1040-1		308 (400-1)	
LNAV/VNAV DA	1178-1 ³ / ₈		446 (500-1 ³ / ₈)	
LNAV MDA	1180-1	448 (500-1)	1180-1 ³ / ₈	448 (500-1 ³ / ₈)
CIRCLING	1380-1 648 (700-1)	1480-1 748 (800-1)	1480-2 ¹ / ₄ 748 (800-2 ¹ / ₄)	1480-2 ¹ / ₂ 748 (800-2 ¹ / ₂)