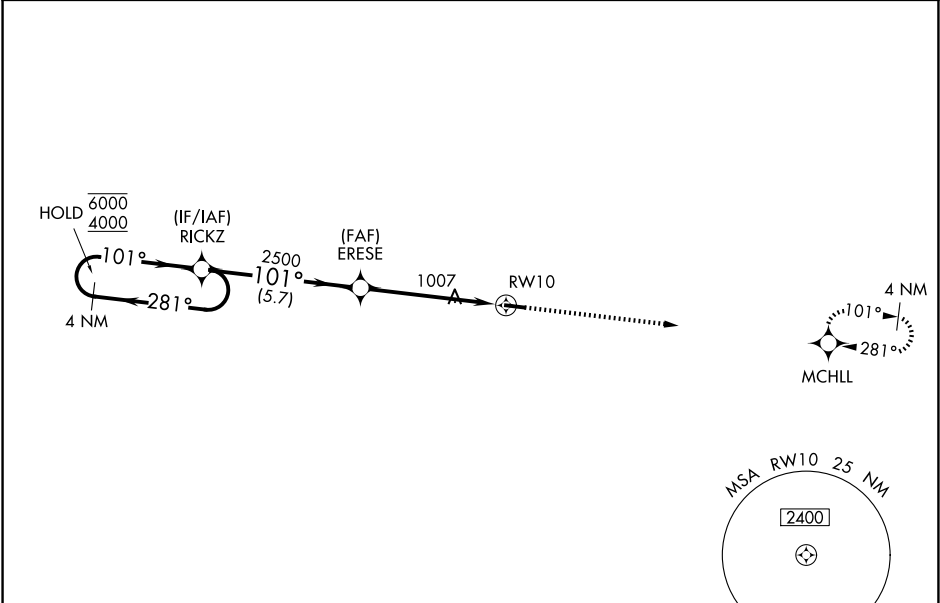


WAAS CH 90442 W10A	APP CRS 101°	Rwy Ldg TDZE Apt Elev	4000 728 732
--	------------------------	-----------------------------	---

RNAV (GPS) RWY 10

BRECKINRIDGE COUNTY (I93)

RNP APCH. ▼ NA Rwy 10 helicopter visibility reduction below ¾ SM NA. Baro-VNAV NA. Use Fort Knox altimeter setting, when not received, use Elizabethtown altimeter setting and increase LPV DA to 1043, LNAV/VNAV DA to 1191 and all MDA 20 feet.		MISSED APPROACH: Climb to 4000 direct MCHLL and hold, continue climb-in-hold to 4000.	
AWOS-3PT 123.625	KFTK ATIS ★ 109.6	LOUISVILLE APP CON 123.675 327.0	CTAF 122.9 0



ELEV 732

TDZE 728

MIRL Rwy 10-28 0

REIL Rwy 10 and 28 0

4000	MCHLL	VGSI and RNAV glidepath not coincident (VGSI Angle 3.10/TCH 34).				4 NM Holding Pattern
CATEGORY	A	B	C	D		
LPV DA	1036-1		308 (400-1)			
LNAV/VNAV DA	1184-1⅓		456 (500-1⅓)			
LNAV MDA	1380-1	652 (700-1)		1380-1⅞	652 (700-1⅞)	
CIRCLING	1380-1 648 (700-1)	1480-1 748 (800-1)	1480-2¼ 748 (800-2¼)	1480-2½ 748 (800-2½)		