

APP CRS  
281°

Rwy Idg  
TDZE  
351

Apt Elev  
351

RNAV (GPS) RWY 28

KENTUCKY DAM STATE PARK (M34)

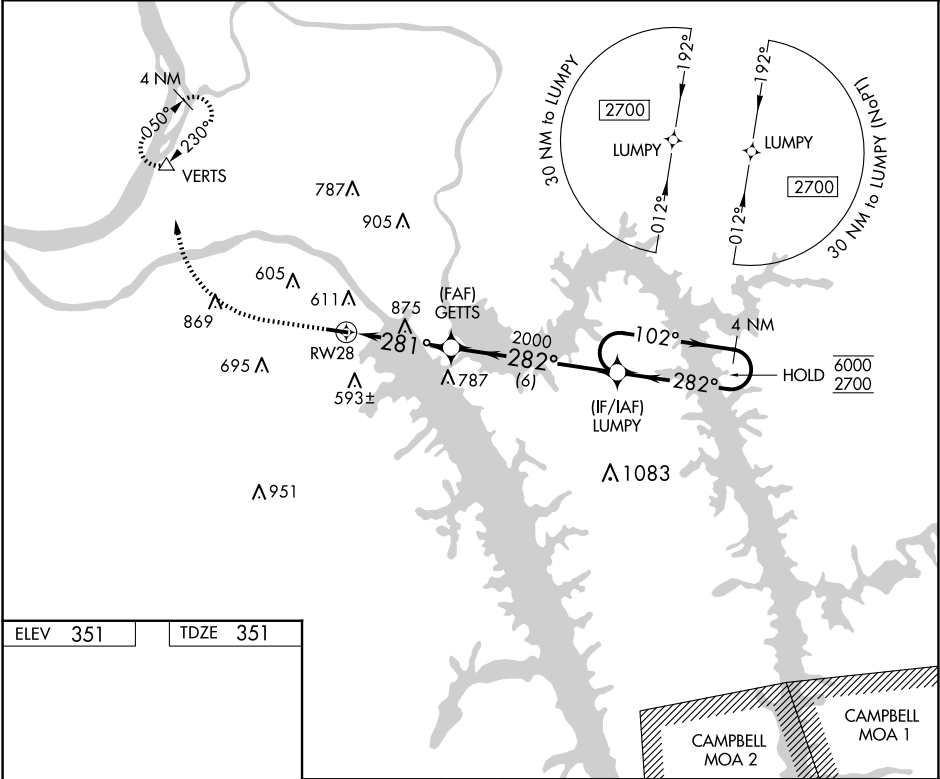
RNP APCH - GPS.

NA

Circling NA south of Rwy 10-28. Procedure NA at night. Rwy 28 helicopter visibility reduction below 1 SM NA. Use Paducah altimeter setting. Avoid Campbell MOA/A-371 when active.

MISSED APPROACH: Climb to 1800 then climbing right turn to 2700 direct VERTS and hold.

PAH ASOS 118.375	MEMPHIS CENTER 133.65 292.15	UNICOM 123.0 (CTAF) 0
---------------------	---------------------------------	--------------------------



ELEV 351

TDZE 351

1800

2700

VERTS

VGSI and descent angles not coincident (VGSI Angle 4.00/TCH 34).

4 NM Holding Pattern

10

3997 X 100

28

281°

GETTS

281°

282°

102°

6000

2700

2000

3.8 NM

6 NM

CATEGORY	A	B	C	D
LNAV MDA	1200-1 849 (900-1)	1200-1¼ 849 (900-1¼)	NA	
CIRCLING	1200-1¼	849 (900-1¼)	NA	

MIRL Rwy 10-28 0

REIL Rws 10 and 28 0

SE-1, 07 AUG 2025 to 04 SEP 2025

SE-1, 07 AUG 2025 to 04 SEP 2025