

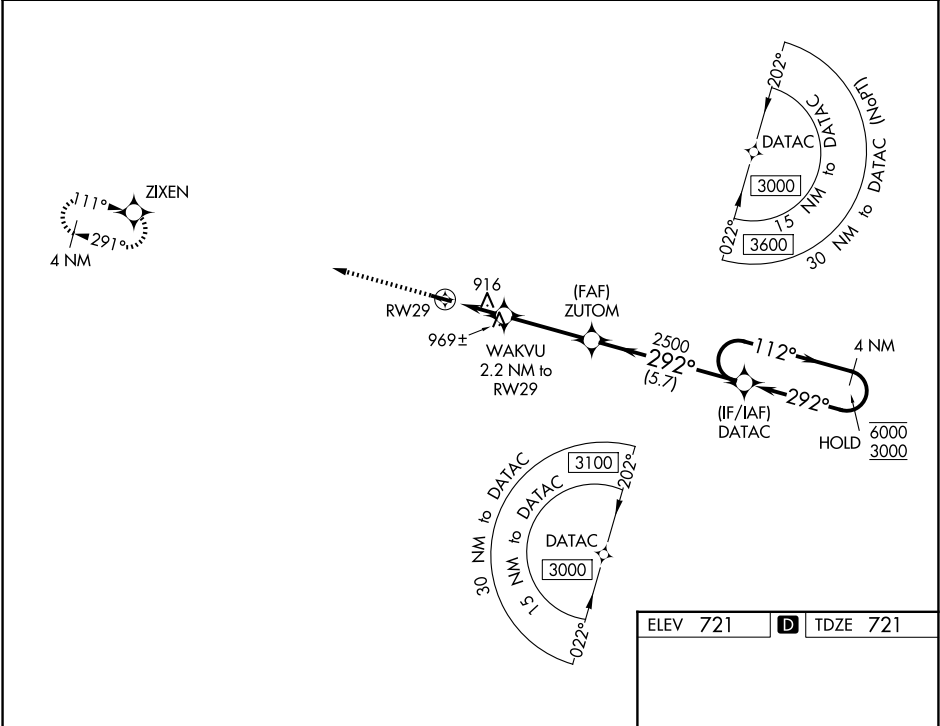
| | | |
|--|------------------------|---|
| WAAS CH 42537 W29A | APP CRS 292° | Rwy Ldg TDZE 721 Apt Elev 721 |
|--|------------------------|---|

RNAV (GPS) RWY 29

CYNTHIANA-HARRISON COUNTY (ØI8)

| | | |
|-----------|---|---|
| RNP APCH. | Procedure NA at night. Rwy 29 helicopter visibility reduction below 1 SM NA. Use Georgetown altimeter setting; when not received, use Lexington altimeter setting and increase all MDA 40 feet. | MISSED APPROACH: Climb to 3000 direct ZIXEN and hold. |
|-----------|---|---|

| | | |
|------------------------------|---|--|
| 27K AWOS-3 119.975 | LEXINGTON APP CON 120.15 259.3 (040°-220°) 120.75 298.9 (221°-039°) | UNICOM 122.8 (CTAF) Ø |
|------------------------------|---|--|



| | | | | |
|----------|-----------------------|-----------------------------|------|----------------------|
| 3000 | ZIXEN | Visual Segment - Obstacles. | DATA | 4 NM Holding Pattern |
| ↑ | ✧ | | | |
| | | | | |
| CATEGORY | A | B | C | D |
| LP MDA | 1240-1 | 519 (600-1) | NA | |
| LNAV MDA | 1280-1 | 559 (600-1) | NA | |
| CIRCLING | 1340-1 619 (700-1) | 1560-1¼ 839 (900-1¼) | NA | |

