

WAAS
CH **62837**
W11A

APP CRS
111°

Rwy Ldg
TDZE **721**
Apt Elev **721**

RNAV (GPS) RWY 11

CYNTHIANA-HARRISON COUNTY (ØI8)

RNP APCH.

▼

▲ NA

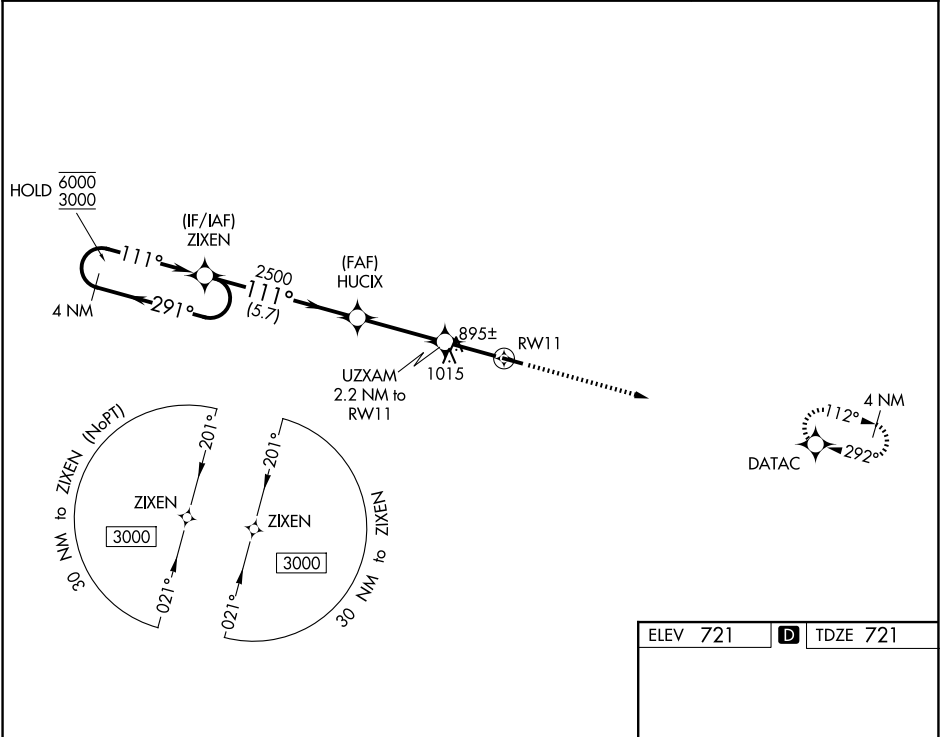
Procedure NA at night. Rwy 11 helicopter visibility reduction below 1 SM NA. Use Georgetown altimeter setting; when not received, use Lexington altimeter setting and increase all MDA 40 feet.

MISSED APPROACH:
Climb to 3000 direct
DATAC and hold.

27K AWOS-3
119.975

LEXINGTON APP CON
120.15 259.3 (040°-220°)
120.75 298.9 (221°-039°)

UNICOM
122.8 (CTAF) **Ø**



4 NM Holding Pattern

Visual Segment - Obstacles.

3000

DATAC

6000
3000

291°
111°

ZIXEN

HUCIX

2500

1460

UZXAM 2.2 NM to RW11

RW11

5.7 NM
3.3 NM
2.2 NM

CATEGORY	A	B	C	D
LP MDA	1220-1	499 (500-1)	NA	
LNAV MDA	1300-1	579 (600-1)	NA	
CIRCLING	1340-1 619 (700-1)	1560-1¼ 839 (900-1¼)	NA	

MIRL Rwy 11-29 Ø

REIL Rwy 11 and 29 Ø