

WAAS CH 50240 W21A	APP CRS 176°	Rwy Idg 3000 TDZE 12 Apt Elev 12
--	------------------------	---

RNAV (GPS) RWY 21

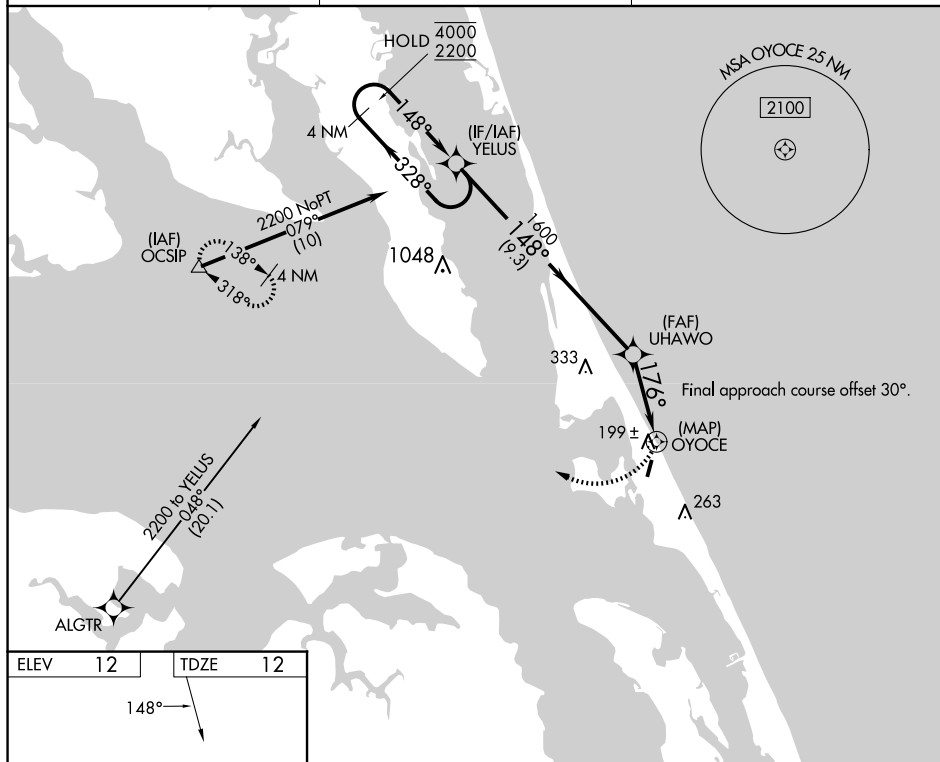
RNP APCH - GPS.

T
A

Rwy 21 helicopter visibility reduction below 1 SM NA.
Procedure NA at night.

MISSED APPROACH: Climbing right turn to 3000 direct OCSIP and hold.

AWOS-3 118.075	CHERRY POINT APP CON 124.725 350.35	CTAF 122.9
--------------------------	---	----------------------

[illegible]