

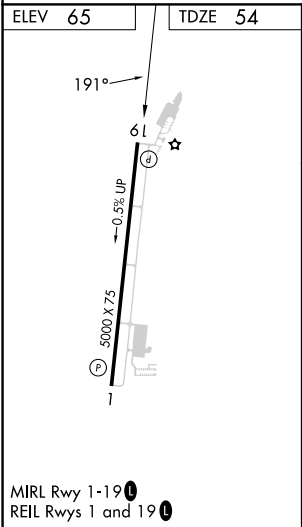
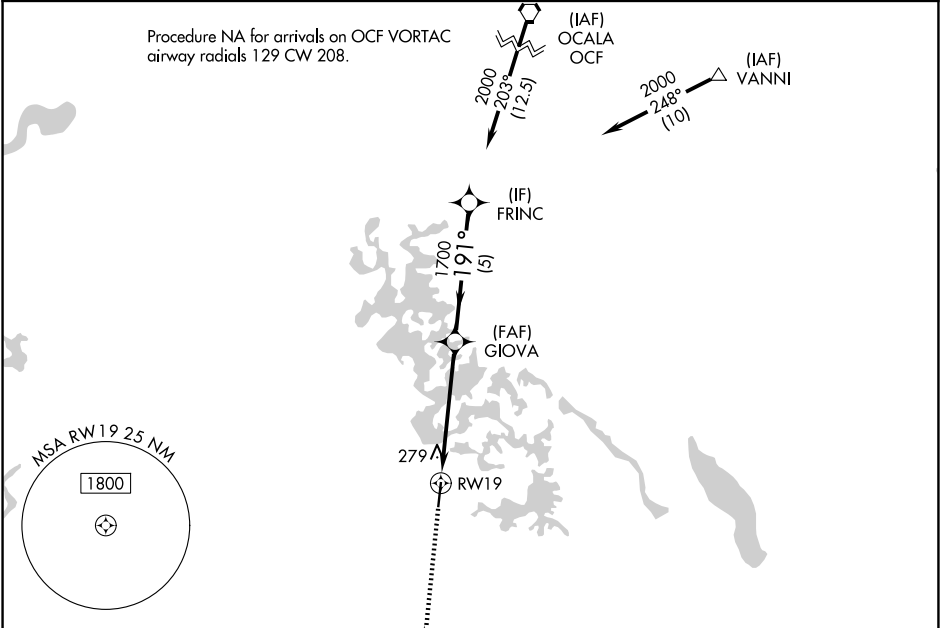
APP CRS	Rwy Ldg	5000
191°	TDZE	54
	Apt Elev	65

RNAV (GPS) RWY 19

INVERNESS (INF')

RNP APCH.	MISSED APPROACH: Climb to 2000 direct BOWSK and on track 176° to REBEC and hold.
Rwy 19 helicopter visibility reduction below 1 SM NA.	

AWOS-3 119.975	JACKSONVILLE APP CON 118.6 251.15	UNICOM 122.725 (CTAF) 0
-------------------	--------------------------------------	----------------------------



2000	BOWSK	REBEC	Visual Segment - Obstacles.	FRINC
↑	✧	tr 176°	✧	✧
5.1 NM 5 NM				
CATEGORY	A	B	C	D
LNAV MDA	580-1	526 (600-1)	580-1½ 526 (600-1½)	NA
CIRCLING	660-1	595 (600-1)	660-1½ 595 (600-1½)	NA