

APP CRS  
**011°**

Rwy Ldg **5000**  
TDZE **65**  
Apt Elev **65**

RNAV (GPS) RWY 1

INVERNESS (INF')

▼

⚠

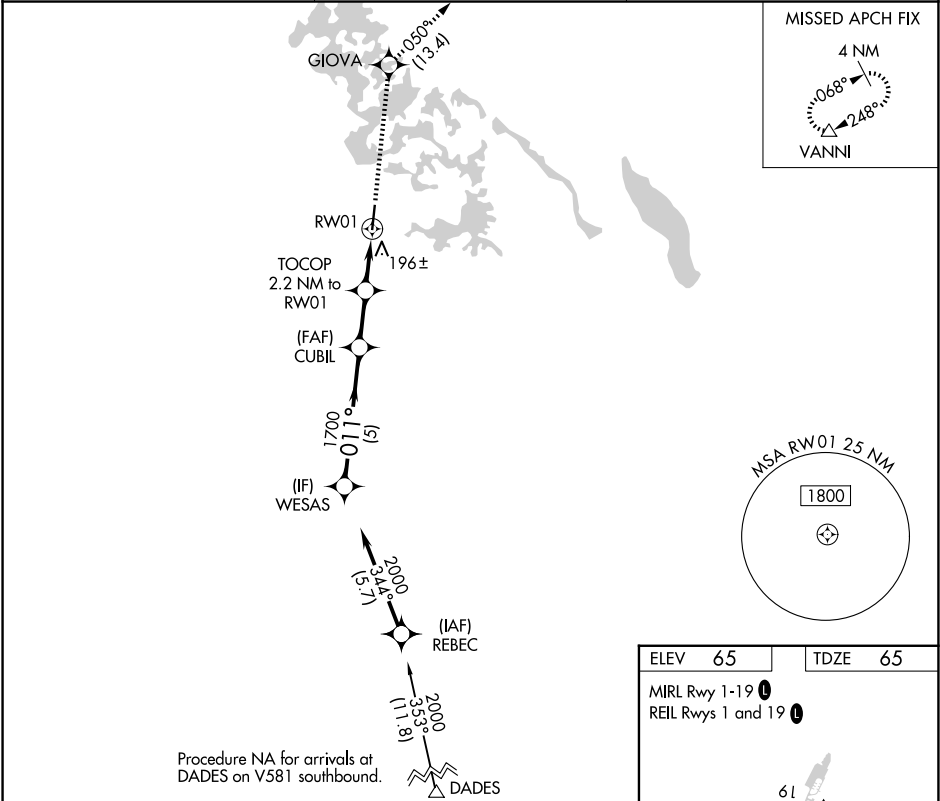
Rwy 1 helicopter visibility reduction below 1 SM NA. Procedure NA at night. When local altimeter setting not received, use OCF altimeter setting and increase all MDAs 60 feet and LNAV visibility Cat C ½ SM, and Circling visibility Cat C ¼ SM.

MISSED APPROACH: Climb to 2000 direct GIOVA and on track 050° to VANNI and hold.

AWOS-3  
**119.975**

JACKSONVILLE APP CON  
**118.6 251.15**

UNICOM  
**122.725 (CTAF) 0**



WESAS

2000

011°

CUBIL

1700

940

RW01

5 NM

2 NM

2.2 NM

2000

GIOVA

tr 050°

VANNI

TOCOP

2.2 NM to RW01

TCH 47

| CATEGORY | A     | B           | C                      | D  |
|----------|-------|-------------|------------------------|----|
| LNAV MDA | 500-1 | 435 (500-1) | 500-1¼<br>435 (500-1¼) | NA |
| CIRCLING | 660-1 | 595 (600-1) | 660-1½<br>595 (600-1½) | NA |

ELEV 65

TDZE 65

MIRL Rwy 1-19 0

REIL Rwys 1 and 19 0

61

0.5% UP

5000 X 75

011°