

WAAS CH 69335 W07A	APP CRS 070°	Rwy Ldg 5208 TDZE 1179 Apt Elev 1179
--	------------------------	---

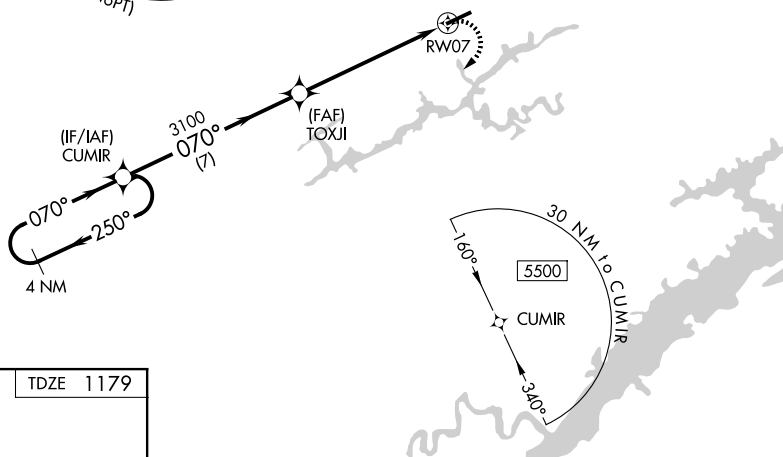
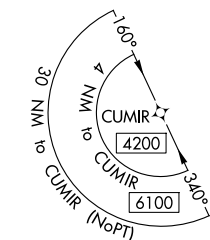
RNAV (GPS) RWY 7
NEW TAZEWELL MUNI (3A2)

NA DME/DME RNP-0.3 NA. Rwy 7, 25 Helicopter visibility reduction below 1 SM NA.
 Procedure NA at night. Obtain local altimeter setting on CTAF; when not received, use Middlesboro altimeter setting and increase all MDAs 60 feet.

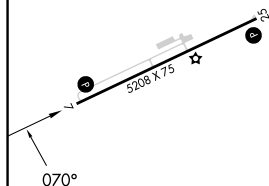
MISSED APPROACH: Climbing right turn to 4200 direct CUMIR and hold.

ATLANTA CENTER
133.6 254.3

CTAF
122.9



ELEV 1179		TDZE 1179
-----------	--	-----------



MIRL Rwy 7-25
REIL Rwy 7 and 25

4 NM Holding Pattern

CUMIR

VGSI and descent angles not coincident
(VGSI Angle 3.50/TCH 35).

4200

250°

070°

070°

TOXJL

3100

3.00° TCH 45

RW07

7 NM

5.9 NM

CATEGORY	A	B	C	D
LP MDA	2240-1¼ 1061 (1100-1¼)	2240-1½ 1061 (1100-1½)	NA	
LNAV MDA	2260-1¼ 1081 (1100-1¼)	2260-1½ 1081 (1100-1½)	NA	
CIRCLING	2260-1¼ 1081 (1100-1¼)	2260-1½ 1081 (1100-1½)	NA	